



SZABO SCANDIC

Part of Europa Biosite

Produktinformation



Forschungsprodukte & Biochemikalien



Zellkultur & Verbrauchsmaterial



Diagnostik & molekulare Diagnostik



Laborgeräte & Service

Weitere Information auf den folgenden Seiten!
See the following pages for more information!



Lieferung & Zahlungsart

siehe unsere [Liefer- und Versandbedingungen](#)

Zuschläge

- Mindermengenzuschlag
- Trockeneiszuschlag
- Gefahrgutzuschlag
- Expressversand

SZABO-SCANDIC HandelsgmbH

Quellenstraße 110, A-1100 Wien

T. +43(0)1 489 3961-0

F. +43(0)1 489 3961-7

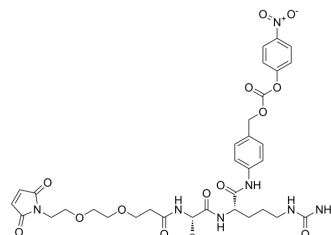
mail@szabo-scandic.com

www.szabo-scandic.com

[linkedin.com/company/szaboscandic](https://www.linkedin.com/company/szaboscandic) 

Mal-PEG2-VCP-NB

Cat. No.:	HY-130084
CAS No.:	2395887-69-9
Molecular Formula:	C ₃₆ H ₄₅ N ₇ O ₁₃
Molecular Weight:	783.78
Target:	ADC Linker
Pathway:	Antibody-drug Conjugate/ADC Related
Storage:	4°C, stored under nitrogen * In solvent : -80°C, 6 months; -20°C, 1 month (stored under nitrogen)



SOLVENT & SOLUBILITY

In Vitro	DMSO : 100 mg/mL (127.59 mM; Need ultrasonic)				
		Solvent Concentration	Mass		
	Preparing Stock Solutions		1 mg	5 mg	10 mg
		1 mM	1.2759 mL	6.3793 mL	12.7587 mL
		5 mM	0.2552 mL	1.2759 mL	2.5517 mL
	10 mM	0.1276 mL	0.6379 mL	1.2759 mL	
Please refer to the solubility information to select the appropriate solvent.					
In Vivo	1. Add each solvent one by one: 10% DMSO >> 40% PEG300 >> 5% Tween-80 >> 45% saline Solubility: ≥ 2.67 mg/mL (3.41 mM); Clear solution				
	2. Add each solvent one by one: 10% DMSO >> 90% (20% SBE-β-CD in saline) Solubility: 2.67 mg/mL (3.41 mM); Suspended solution; Need ultrasonic				
	3. Add each solvent one by one: 10% DMSO >> 90% corn oil Solubility: ≥ 2.67 mg/mL (3.41 mM); Clear solution				

BIOLOGICAL ACTIVITY

Description	Mal-PEG2-VCP-NB is a cleavable ADC linker containing a Maleimide group, 2-unit PEG and a VCP NB.	
IC₅₀ & Target	Protease Cleavable Linker	Cleavable Linker

Caution: Product has not been fully validated for medical applications. For research use only.

Tel: 609-228-6898

Fax: 609-228-5909

E-mail: tech@MedChemExpress.com

Address: 1 Deer Park Dr, Suite Q, Monmouth Junction, NJ 08852, USA