



# SZABO SCANDIC

Part of Europa Biosite

## Produktinformation



Forschungsprodukte & Biochemikalien



Zellkultur & Verbrauchsmaterial



Diagnostik & molekulare Diagnostik



Laborgeräte & Service

Weitere Information auf den folgenden Seiten!  
See the following pages for more information!



### Lieferung & Zahlungsart

siehe unsere [Liefer- und Versandbedingungen](#)

### Zuschläge

- Mindermengenzuschlag
- Trockeneiszuschlag
- Gefahrgutzuschlag
- Expressversand

### SZABO-SCANDIC HandelsgmbH

Quellenstraße 110, A-1100 Wien

T. +43(0)1 489 3961-0

F. +43(0)1 489 3961-7

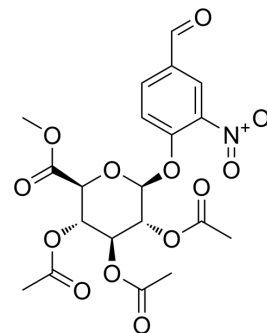
[mail@szabo-scandic.com](mailto:mail@szabo-scandic.com)

[www.szabo-scandic.com](http://www.szabo-scandic.com)

[linkedin.com/company/szaboscandic](https://www.linkedin.com/company/szaboscandic) 

## Me-triacetyl-β-D-glucopyranuronate-Ph-ald-NO<sub>2</sub>

<b>Cat. No.:</b>	HY-131086
<b>CAS No.:</b>	148579-93-5
<b>Molecular Formula:</b>	C <sub>20</sub> H <sub>21</sub> NO <sub>13</sub>
<b>Molecular Weight:</b>	483.38
<b>Target:</b>	ADC Linker
<b>Pathway:</b>	Antibody-drug Conjugate/ADC Related
<b>Storage:</b>	4°C, sealed storage, away from moisture and light * In solvent : -80°C, 6 months; -20°C, 1 month (sealed storage, away from moisture and light)



### SOLVENT & SOLUBILITY

<b>In Vitro</b>	DMSO : 200 mg/mL (413.75 mM; Need ultrasonic)				
		Solvent Concentration	Mass 1 mg	5 mg	10 mg
	<b>Preparing Stock Solutions</b>	1 mM	2.0688 mL	10.3438 mL	20.6877 mL
		5 mM	0.4138 mL	2.0688 mL	4.1375 mL
		10 mM	0.2069 mL	1.0344 mL	2.0688 mL
Please refer to the solubility information to select the appropriate solvent.					
<b>In Vivo</b>	1. Add each solvent one by one: 10% DMSO >> 40% PEG300 >> 5% Tween-80 >> 45% saline Solubility: ≥ 2.5 mg/mL (5.17 mM); Clear solution  2. Add each solvent one by one: 10% DMSO >> 90% corn oil Solubility: ≥ 2.5 mg/mL (5.17 mM); Clear solution				

### BIOLOGICAL ACTIVITY

<b>Description</b>	Me-triacetyl-β-D-glucopyranuronate-Ph-ald-NO <sub>2</sub> is a cleavable ADC linker used in the synthesis of antibody-drug conjugates (ADCs).	
<b>IC<sub>50</sub> &amp; Target</b>	Glycosidase Cleavable	Cleavable
<b>In Vitro</b>	ADCs are comprised of an antibody to which is attached an ADC cytotoxin through an ADC linker. MCE has not independently confirmed the accuracy of these methods. They are for reference only.	

### REFERENCES

**Caution: Product has not been fully validated for medical applications. For research use only.**

Tel: 609-228-6898

Fax: 609-228-5909

E-mail: [tech@MedChemExpress.com](mailto:tech@MedChemExpress.com)

Address: 1 Deer Park Dr, Suite Q, Monmouth Junction, NJ 08852, USA