



# SZABO SCANDIC

Part of Europa Biosite

## Produktinformation



Forschungsprodukte & Biochemikalien



Zellkultur & Verbrauchsmaterial



Diagnostik & molekulare Diagnostik



Laborgeräte & Service

Weitere Information auf den folgenden Seiten!  
See the following pages for more information!



### Lieferung & Zahlungsart

siehe unsere [Liefer- und Versandbedingungen](#)

### Zuschläge

- Mindermengenzuschlag
- Trockeneiszuschlag
- Gefahrgutzuschlag
- Expressversand

### SZABO-SCANDIC HandelsgmbH

Quellenstraße 110, A-1100 Wien

T. +43(0)1 489 3961-0

F. +43(0)1 489 3961-7

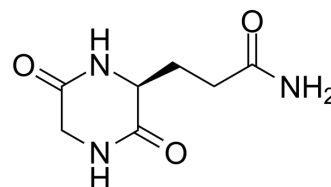
[mail@szabo-scandic.com](mailto:mail@szabo-scandic.com)

[www.szabo-scandic.com](http://www.szabo-scandic.com)

[linkedin.com/company/szaboscandic](https://www.linkedin.com/company/szaboscandic) 

## Cyclo(Gly-Gln)

Cat. No.:	HY-131111
CAS No.:	52662-00-7
Molecular Formula:	C <sub>7</sub> H <sub>11</sub> N <sub>3</sub> O <sub>3</sub>
Molecular Weight:	185.18
Target:	Others
Pathway:	Others
Storage:	Sealed storage, away from moisture Powder    -80°C    2 years -20°C    1 year



\* In solvent : -80°C, 6 months; -20°C, 1 month (sealed storage, away from moisture)

### SOLVENT & SOLUBILITY

#### In Vitro

H<sub>2</sub>O : 13.89 mg/mL (75.01 mM; ultrasonic and warming and heat to 60°C)

Concentration	Solvent	Mass		
		1 mg	5 mg	10 mg
Preparing Stock Solutions	1 mM	5.4002 mL	27.0008 mL	54.0015 mL
	5 mM	1.0800 mL	5.4002 mL	10.8003 mL
	10 mM	0.5400 mL	2.7001 mL	5.4002 mL

Please refer to the solubility information to select the appropriate solvent.

### BIOLOGICAL ACTIVITY

#### Description

Cyclo(Gly-Gln) is a cyclic dipeptide<sup>[1]</sup>.

### REFERENCES

[1]. Takashi Mizuma, et al. Uptake of Cyclic Dipeptide by PEPT1 in Caco-2 Cells: Phenolic Hydroxyl Group of Substrate Enhances Affinity for PEPT1. J Pharm Pharmacol. 2002 Sep;54(9):1293-6.

**Caution: Product has not been fully validated for medical applications. For research use only.**

Tel: 609-228-6898

Fax: 609-228-5909

E-mail: tech@MedChemExpress.com

Address: 1 Deer Park Dr, Suite Q, Monmouth Junction, NJ 08852, USA