



# SZABO SCANDIC

Part of Europa Biosite

## Produktinformation



Forschungsprodukte & Biochemikalien



Zellkultur & Verbrauchsmaterial



Diagnostik & molekulare Diagnostik



Laborgeräte & Service

Weitere Information auf den folgenden Seiten!  
See the following pages for more information!



### Lieferung & Zahlungsart

siehe unsere [Liefer- und Versandbedingungen](#)

### Zuschläge

- Mindermengenzuschlag
- Trockeneiszuschlag
- Gefahrgutzuschlag
- Expressversand

### SZABO-SCANDIC HandelsgmbH

Quellenstraße 110, A-1100 Wien

T. +43(0)1 489 3961-0

F. +43(0)1 489 3961-7

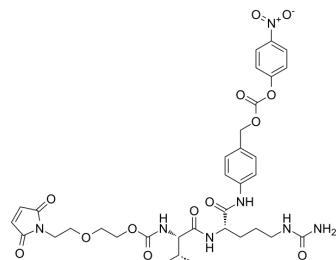
[mail@szabo-scandic.com](mailto:mail@szabo-scandic.com)

[www.szabo-scandic.com](http://www.szabo-scandic.com)

[linkedin.com/company/szaboscandic](https://www.linkedin.com/company/szaboscandic) 

## Mal-PEG2-Val-Cit-PABA-PNP

<b>Cat. No.:</b>	HY-131156
<b>CAS No.:</b>	1345681-52-8
<b>Molecular Formula:</b>	C <sub>34</sub> H <sub>41</sub> N <sub>7</sub> O <sub>13</sub>
<b>Molecular Weight:</b>	755.73
<b>Target:</b>	ADC Linker
<b>Pathway:</b>	Antibody-drug Conjugate/ADC Related
<b>Storage:</b>	4°C, protect from light, stored under nitrogen * In solvent : -80°C, 6 months; -20°C, 1 month (protect from light, stored under nitrogen)



### BIOLOGICAL ACTIVITY

<b>Description</b>	Mal-PEG2-Val-Cit-PABA-PNP is a cleavable ADC linker used in the synthesis of antibody-drug conjugates (ADCs) <sup>[1]</sup> .	
<b>IC<sub>50</sub> &amp; Target</b>	Protease Cleavable Linker	Cleavable Linker
<b>In Vitro</b>	ADCs are comprised of an antibody to which is attached an ADC cytotoxin through an ADC linker <sup>[1]</sup> . MCE has not independently confirmed the accuracy of these methods. They are for reference only.	

### REFERENCES

[1]. Beck A, et al. Strategies and challenges for the next generation of antibody-drug conjugates. Nat Rev Drug Discov. 2017 May;16(5):315-337.

**Caution: Product has not been fully validated for medical applications. For research use only.**

Tel: 609-228-6898

Fax: 609-228-5909

E-mail: tech@MedChemExpress.com

Address: 1 Deer Park Dr, Suite Q, Monmouth Junction, NJ 08852, USA