



# SZABO SCANDIC

Part of Europa Biosite

## Produktinformation



Forschungsprodukte & Biochemikalien



Zellkultur & Verbrauchsmaterial



Diagnostik & molekulare Diagnostik



Laborgeräte & Service

Weitere Information auf den folgenden Seiten!  
See the following pages for more information!



### Lieferung & Zahlungsart

siehe unsere [Liefer- und Versandbedingungen](#)

### Zuschläge

- Mindermengenzuschlag
- Trockeneiszuschlag
- Gefahrgutzuschlag
- Expressversand

### SZABO-SCANDIC HandelsgmbH

Quellenstraße 110, A-1100 Wien

T. +43(0)1 489 3961-0

F. +43(0)1 489 3961-7

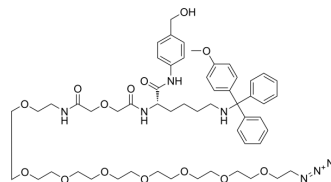
[mail@szabo-scandic.com](mailto:mail@szabo-scandic.com)

[www.szabo-scandic.com](http://www.szabo-scandic.com)

[linkedin.com/company/szaboscandic](https://www.linkedin.com/company/szaboscandic) 

## Lys(MMT)-PAB-oxdiacetamide-PEG8-N3

Cat. No.:	HY-131157
CAS No.:	1224601-12-0
Molecular Formula:	C <sub>55</sub> H <sub>77</sub> N <sub>7</sub> O <sub>14</sub>
Molecular Weight:	1060.24
Target:	ADC Linker
Pathway:	Antibody-drug Conjugate/ADC Related
Storage:	-20°C, protect from light * In solvent : -80°C, 6 months; -20°C, 1 month (protect from light)



### BIOLOGICAL ACTIVITY

#### Description

Lys(MMT)-PAB-oxdiacetamide-PEG8-N3 is a cleavable antibody agent conjugate linker used in the synthesis of antibody-drug conjugates (ADCs)<sup>[1]</sup>. Lys(MMT)-PAB-oxdiacetamide-PEG8-N3 is a click chemistry reagent, it contains an Azide group and can undergo copper-catalyzed azide-alkyne cycloaddition reaction (CuAAC) with molecules containing Alkyne groups. Strain-promoted alkyne-azide cycloaddition (SPAAC) can also occur with molecules containing DBCO or BCN groups.

### REFERENCES

[1]. Serengulam V. Govindan, et al. EFFICACY OF ANTI-HLA-DR ANTIBODY DRUG CONJUGATE IMMU-140 (hL243-CL2A-SN-38) IN HLA-DR POSITIVE CANCERS. Patent US20170360770.

**Caution: Product has not been fully validated for medical applications. For research use only.**

Tel: 609-228-6898

Fax: 609-228-5909

E-mail: tech@MedChemExpress.com

Address: 1 Deer Park Dr, Suite Q, Monmouth Junction, NJ 08852, USA