



# SZABO SCANDIC

Part of Europa Biosite

## Produktinformation



Forschungsprodukte & Biochemikalien



Zellkultur & Verbrauchsmaterial



Diagnostik & molekulare Diagnostik



Laborgeräte & Service

Weitere Information auf den folgenden Seiten!  
See the following pages for more information!



### Lieferung & Zahlungsart

siehe unsere [Liefer- und Versandbedingungen](#)

### Zuschläge

- Mindermengenzuschlag
- Trockeneiszuschlag
- Gefahrgutzuschlag
- Expressversand

### SZABO-SCANDIC HandelsgmbH

Quellenstraße 110, A-1100 Wien

T. +43(0)1 489 3961-0

F. +43(0)1 489 3961-7

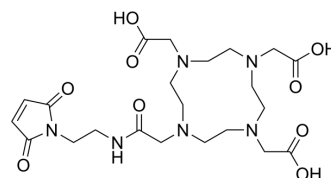
[mail@szabo-scandic.com](mailto:mail@szabo-scandic.com)

[www.szabo-scandic.com](http://www.szabo-scandic.com)

[linkedin.com/company/szaboscandic](https://www.linkedin.com/company/szaboscandic) 

## Maleimide-DOTA

<b>Cat. No.:</b>	HY-133540
<b>CAS No.:</b>	1006711-90-5
<b>Molecular Formula:</b>	C <sub>22</sub> H <sub>34</sub> N <sub>6</sub> O <sub>9</sub>
<b>Molecular Weight:</b>	526.54
<b>Target:</b>	ADC Linker
<b>Pathway:</b>	Antibody-drug Conjugate/ADC Related
<b>Storage:</b>	-20°C, sealed storage, away from moisture and light * In solvent : -80°C, 6 months; -20°C, 1 month (sealed storage, away from moisture and light)



### SOLVENT & SOLUBILITY

#### In Vitro

H<sub>2</sub>O : 100 mg/mL (189.92 mM; Need ultrasonic)  
DMSO : 100 mg/mL (189.92 mM; ultrasonic and warming and heat to 60°C)

Preparing Stock Solutions	Solvent Concentration	Mass		
		1 mg	5 mg	10 mg
	1 mM	1.8992 mL	9.4960 mL	18.9919 mL
	5 mM	0.3798 mL	1.8992 mL	3.7984 mL
	10 mM	0.1899 mL	0.9496 mL	1.8992 mL

Please refer to the solubility information to select the appropriate solvent.

#### In Vivo

- Add each solvent one by one: PBS  
Solubility: 100 mg/mL (189.92 mM); Clear solution; Need ultrasonic
- Add each solvent one by one: 10% DMSO >> 40% PEG300 >> 5% Tween-80 >> 45% saline  
Solubility: ≥ 1.25 mg/mL (2.37 mM); Clear solution
- Add each solvent one by one: 10% DMSO >> 90% (20% SBE-β-CD in saline)  
Solubility: ≥ 1.25 mg/mL (2.37 mM); Clear solution
- Add each solvent one by one: 10% DMSO >> 90% corn oil  
Solubility: ≥ 1.25 mg/mL (2.37 mM); Clear solution

### BIOLOGICAL ACTIVITY

<b>Description</b>	Maleimide-DOTA is a non-cleavable ADC linker used in the synthesis of antibody-drug conjugates (ADCs).
<b>IC<sub>50</sub> &amp; Target</b>	Non-cleavable
<b>In Vitro</b>	ADCs are comprised of an antibody to which is attached an ADC cytotoxin through an ADC linker.

---

MCE has not independently confirmed the accuracy of these methods. They are for reference only.

---

## CUSTOMER VALIDATION

---

- ACS Omega. August 5, 2022.

See more customer validations on [www.MedChemExpress.com](http://www.MedChemExpress.com)

**Caution: Product has not been fully validated for medical applications. For research use only.**

Tel: 609-228-6898

Fax: 609-228-5909

E-mail: [tech@MedChemExpress.com](mailto:tech@MedChemExpress.com)

Address: 1 Deer Park Dr, Suite Q, Monmouth Junction, NJ 08852, USA