



SZABO SCANDIC

Part of Europa Biosite

Produktinformation



Forschungsprodukte & Biochemikalien



Zellkultur & Verbrauchsmaterial



Diagnostik & molekulare Diagnostik



Laborgeräte & Service

Weitere Information auf den folgenden Seiten!
See the following pages for more information!



Lieferung & Zahlungsart

siehe unsere [Liefer- und Versandbedingungen](#)

Zuschläge

- Mindermengenzuschlag
- Trockeneiszuschlag
- Gefahrgutzuschlag
- Expressversand

SZABO-SCANDIC HandelsgmbH

Quellenstraße 110, A-1100 Wien

T. +43(0)1 489 3961-0

F. +43(0)1 489 3961-7

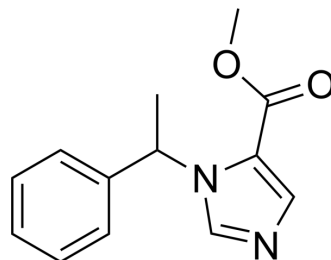
mail@szabo-scandic.com

www.szabo-scandic.com

[linkedin.com/company/szaboscandic](https://www.linkedin.com/company/szaboscandic) 

Metomidate

Cat. No.:	HY-133837		
CAS No.:	5377-20-8		
Molecular Formula:	C ₁₃ H ₁₄ N ₂ O ₂		
Molecular Weight:	230.26		
Target:	Others		
Pathway:	Others		
Storage:	Powder	-20°C	3 years
		4°C	2 years
	In solvent	-80°C	6 months
		-20°C	1 month



SOLVENT & SOLUBILITY

In Vitro

Chloroform : ≥ 125 mg/mL (542.86 mM)
 DMSO : 100 mg/mL (434.29 mM; Need ultrasonic)
 * "≥" means soluble, but saturation unknown.

	Solvent Concentration	Mass	1 mg	5 mg	10 mg
		Concentration	1 mg	5 mg	10 mg
Preparing Stock Solutions	1 mM		4.3429 mL	21.7146 mL	43.4292 mL
	5 mM		0.8686 mL	4.3429 mL	8.6858 mL
	10 mM		0.4343 mL	2.1715 mL	4.3429 mL

Please refer to the solubility information to select the appropriate solvent.

BIOLOGICAL ACTIVITY

Description

Metomidate (R7315; Methoxymol) is a nonbarbiturate hypnotic agent, that exhibits anesthetic activity in fish. Metomidate is used as a PET-CT imaging agent, as it is labeled with radioactive isotope^{[1][2]}.

REFERENCES

- [1]. Wu X, et al., [11C]metomidate PET-CT versus adrenal vein sampling for diagnosing surgically curable primary aldosteronism: a prospective, within-patient trial. *Nat Med.* 2023 Jan;29(1):190-202.
- [2]. Mattson N S, et al., Metomidate, a better anesthetic for cod (*Gadus morhua*) in comparison with benzocaine, MS-222, chlorobutanol, and phenoxyethanol[J]. *Aquaculture*, 1989, 83(1-2): 89-94.

Caution: Product has not been fully validated for medical applications. For research use only.

Tel: 609-228-6898

Fax: 609-228-5909

E-mail: tech@MedChemExpress.com

Address: 1 Deer Park Dr, Suite Q, Monmouth Junction, NJ 08852, USA