



# SZABO SCANDIC

Part of Europa Biosite

## Produktinformation



Forschungsprodukte & Biochemikalien



Zellkultur & Verbrauchsmaterial



Diagnostik & molekulare Diagnostik



Laborgeräte & Service

Weitere Information auf den folgenden Seiten!  
See the following pages for more information!



### Lieferung & Zahlungsart

siehe unsere [Liefer- und Versandbedingungen](#)

### Zuschläge

- Mindermengenzuschlag
- Trockeneiszuschlag
- Gefahrgutzuschlag
- Expressversand

### SZABO-SCANDIC HandelsgmbH

Quellenstraße 110, A-1100 Wien

T. +43(0)1 489 3961-0

F. +43(0)1 489 3961-7

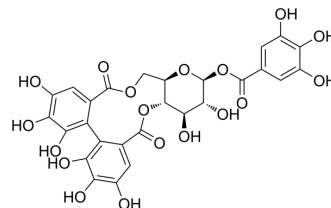
[mail@szabo-scandic.com](mailto:mail@szabo-scandic.com)

[www.szabo-scandic.com](http://www.szabo-scandic.com)

[linkedin.com/company/szaboscandic](https://www.linkedin.com/company/szaboscandic) 

## Strictinin

Cat. No.:	HY-135319		
CAS No.:	517-46-4		
Molecular Formula:	C <sub>27</sub> H <sub>22</sub> O <sub>18</sub>		
Molecular Weight:	634.45		
Target:	Others		
Pathway:	Others		
Storage:	Powder	-20°C	3 years
	In solvent	-80°C	6 months
		-20°C	1 month



### SOLVENT & SOLUBILITY

#### In Vitro

H<sub>2</sub>O : 50 mg/mL (78.81 mM; Need ultrasonic)

Concentration	Mass		
	1 mg	5 mg	10 mg
1 mM	1.5762 mL	7.8808 mL	15.7617 mL
5 mM	0.3152 mL	1.5762 mL	3.1523 mL
10 mM	0.1576 mL	0.7881 mL	1.5762 mL

Please refer to the solubility information to select the appropriate solvent.

### BIOLOGICAL ACTIVITY

#### Description

Strictinin is a phenolic compound isolated from Pu'er teas. Strictinin has potential antiviral, antibacterial and laxative activities. Strictinin occurs by accelerating intestinal transit rather than enhancing gastric emptying, increasing food intake, or inducing diarrhea in rats.

### REFERENCES

[1]. Hsieh SK, et al. Antibacterial and laxative activities of strictinin isolated from Pu'er tea (*Camellia sinensis*). *J Food Drug Anal.* 2016 Oct;24(4):722-729.

**Caution: Product has not been fully validated for medical applications. For research use only.**

Tel: 609-228-6898

Fax: 609-228-5909

E-mail: tech@MedChemExpress.com

Address: 1 Deer Park Dr, Suite Q, Monmouth Junction, NJ 08852, USA