



# SZABO SCANDIC

Part of Europa Biosite

## Produktinformation



Forschungsprodukte & Biochemikalien



Zellkultur & Verbrauchsmaterial



Diagnostik & molekulare Diagnostik



Laborgeräte & Service

Weitere Information auf den folgenden Seiten!  
See the following pages for more information!



### Lieferung & Zahlungsart

siehe unsere [Liefer- und Versandbedingungen](#)

### Zuschläge

- Mindermengenzuschlag
- Trockeneiszuschlag
- Gefahrgutzuschlag
- Expressversand

### SZABO-SCANDIC HandelsgmbH

Quellenstraße 110, A-1100 Wien

T. +43(0)1 489 3961-0

F. +43(0)1 489 3961-7

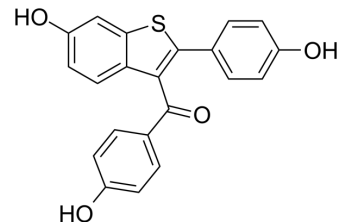
[mail@szabo-scandic.com](mailto:mail@szabo-scandic.com)

[www.szabo-scandic.com](http://www.szabo-scandic.com)

[linkedin.com/company/szaboscandic](https://www.linkedin.com/company/szaboscandic) 

## LY88074

Cat. No.:	HY-135585		
CAS No.:	177744-96-6		
Molecular Formula:	C <sub>21</sub> H <sub>14</sub> O <sub>4</sub> S		
Molecular Weight:	362.4		
Target:	Others		
Pathway:	Others		
Storage:	Powder	-20°C	3 years
	In solvent	-80°C	6 months
		-20°C	1 month



### SOLVENT & SOLUBILITY

In Vitro	DMSO : 100 mg/mL (275.94 mM; Need ultrasonic)					
	Preparing Stock Solutions	Solvent	Mass	1 mg	5 mg	10 mg
		Concentration				
		1 mM		2.7594 mL	13.7969 mL	27.5938 mL
		5 mM		0.5519 mL	2.7594 mL	5.5188 mL
10 mM		0.2759 mL	1.3797 mL	2.7594 mL		
Please refer to the solubility information to select the appropriate solvent.						
In Vivo	1. Add each solvent one by one: 10% DMSO >> 40% PEG300 >> 5% Tween-80 >> 45% saline Solubility: ≥ 2.5 mg/mL (6.90 mM); Clear solution					
	2. Add each solvent one by one: 10% DMSO >> 90% (20% SBE-β-CD in saline) Solubility: ≥ 2.5 mg/mL (6.90 mM); Clear solution					

### BIOLOGICAL ACTIVITY

Description	LY88074 (Compound 88074) is a Raloxifene analog lacking the basic side chain. Raloxifene is a selective estrogen receptor modulator, and reduces fracture risk at least in part by improving the mechanical properties of bone in a cell- and estrogen receptor-independent manner <sup>[1]</sup> .
In Vitro	Removal of the aminoethylpiperidine moiety, as in LY88074 (Compound 88074), reduces bone binding, compared to Raloxifene. The interaction of LY88074 with collagen matrix, although significant, is less than the interaction found with Raloxifene <sup>[1]</sup> . MCE has not independently confirmed the accuracy of these methods. They are for reference only.

---

## REFERENCES

---

[1]. Bivi N, et al. Structural features underlying raloxifene's biophysical interaction with bone matrix. *Bioorg Med Chem*. 2016 Feb 15;24(4):759-67.

---

**Caution: Product has not been fully validated for medical applications. For research use only.**

Tel: 609-228-6898

Fax: 609-228-5909

E-mail: [tech@MedChemExpress.com](mailto:tech@MedChemExpress.com)

Address: 1 Deer Park Dr, Suite Q, Monmouth Junction, NJ 08852, USA