



SZABO SCANDIC

Part of Europa Biosite

Produktinformation



Forschungsprodukte & Biochemikalien



Zellkultur & Verbrauchsmaterial



Diagnostik & molekulare Diagnostik



Laborgeräte & Service

Weitere Information auf den folgenden Seiten!
See the following pages for more information!



Lieferung & Zahlungsart

siehe unsere [Liefer- und Versandbedingungen](#)

Zuschläge

- Mindermengenzuschlag
- Trockeneiszuschlag
- Gefahrgutzuschlag
- Expressversand

SZABO-SCANDIC HandelsgmbH

Quellenstraße 110, A-1100 Wien

T. +43(0)1 489 3961-0

F. +43(0)1 489 3961-7

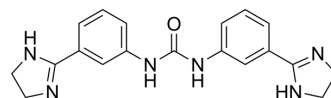
mail@szabo-scandic.com

www.szabo-scandic.com

[linkedin.com/company/szaboscandic](https://www.linkedin.com/company/szaboscandic) 

Imidocarb

| | |
|--------------------|---|
| Cat. No.: | HY-135611 |
| CAS No.: | 27885-92-3 |
| Molecular Formula: | C ₁₉ H ₂₀ N ₆ O |
| Molecular Weight: | 348.4 |
| Target: | Parasite; Antibiotic |
| Pathway: | Anti-infection |
| Storage: | Please store the product under the recommended conditions in the Certificate of Analysis. |



BIOLOGICAL ACTIVITY

| | |
|-------------|---|
| Description | Imidocarb is a potent antiprotozoal agent. Imidocarb is active against the parasite <i>B. bovis</i> with an IC ₅₀ of 87 µg/mL ^[1] . |
| In Vivo | Imidocarb dipropionate is administered by subcutaneous or intramuscular injection to horses (3.4 mg/kg bw) and cattle (2.1 mg/kg bw). In horses, up to 4 doses may be given at 72-hour intervals. A second dose may be given 2 weeks after the first. Imidocarb dipropionate is also used in sheep (1. 2mg/kg bw) for the treatment of babesiosis and anaplasmosis. The acute oral LD50 value of Imidocarb dipropionate is in the range of 646 to 723 mg/kg bw in mice. The acute oral LD50 value of Imidocarb is in the range of 454 to 1251 mg/kg bw in rats. MCE has not independently confirmed the accuracy of these methods. They are for reference only. |

REFERENCES

[1]. Rodriguez RI, et al. In vitro responsiveness of *Babesia bovis* to Imidocarb dipropionate and the selection of a drug-adapted line. *Vet Parasitol.* 1996 Mar;62(1-2):35-41.

Caution: Product has not been fully validated for medical applications. For research use only.

Tel: 609-228-6898

Fax: 609-228-5909

E-mail: tech@MedChemExpress.com

Address: 1 Deer Park Dr, Suite Q, Monmouth Junction, NJ 08852, USA