



# SZABO SCANDIC

Part of Europa Biosite

## Produktinformation



Forschungsprodukte & Biochemikalien



Zellkultur & Verbrauchsmaterial



Diagnostik & molekulare Diagnostik



Laborgeräte & Service

Weitere Information auf den folgenden Seiten!  
See the following pages for more information!



### Lieferung & Zahlungsart

siehe unsere [Liefer- und Versandbedingungen](#)

### Zuschläge

- Mindermengenzuschlag
- Trockeneiszuschlag
- Gefahrgutzuschlag
- Expressversand

### SZABO-SCANDIC HandelsgmbH

Quellenstraße 110, A-1100 Wien

T. +43(0)1 489 3961-0

F. +43(0)1 489 3961-7

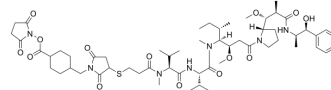
[mail@szabo-scandic.com](mailto:mail@szabo-scandic.com)

[www.szabo-scandic.com](http://www.szabo-scandic.com)

[linkedin.com/company/szaboscandic](https://www.linkedin.com/company/szaboscandic)

## MMAE-SMCC

<b>Cat. No.:</b>	HY-135660
<b>CAS No.:</b>	2021179-11-1
<b>Molecular Formula:</b>	C <sub>58</sub> H <sub>89</sub> N <sub>7</sub> O <sub>14</sub> S
<b>Molecular Weight:</b>	1140.43
<b>Target:</b>	Drug-Linker Conjugates for ADC
<b>Pathway:</b>	Antibody-drug Conjugate/ADC Related
<b>Storage:</b>	-20°C, protect from light, stored under nitrogen * The compound is unstable in solutions, freshly prepared is recommended.



### SOLVENT & SOLUBILITY

<b>In Vitro</b>	DMSO : 100 mg/mL (87.69 mM; Need ultrasonic)				
		Solvent Concentration	Mass		
	<b>Preparing Stock Solutions</b>	<b>1 mM</b>	<b>1 mg</b>	<b>5 mg</b>	<b>10 mg</b>
		<b>5 mM</b>	0.8769 mL	4.3843 mL	8.7686 mL
		<b>10 mM</b>	0.1754 mL	0.8769 mL	1.7537 mL
	<b>10 mM</b>	0.0877 mL	0.4384 mL	0.8769 mL	
Please refer to the solubility information to select the appropriate solvent.					
<b>In Vivo</b>	1. Add each solvent one by one: 10% DMSO >> 40% PEG300 >> 5% Tween-80 >> 45% saline Solubility: ≥ 2.5 mg/mL (2.19 mM); Clear solution				
	2. Add each solvent one by one: 10% DMSO >> 90% (20% SBE-β-CD in saline) Solubility: ≥ 2.5 mg/mL (2.19 mM); Clear solution				
	3. Add each solvent one by one: 10% DMSO >> 90% corn oil Solubility: ≥ 2.5 mg/mL (2.19 mM); Clear solution				

### BIOLOGICAL ACTIVITY

<b>Description</b>	MMAE-SMCC is a agent-linker conjugate for ADC. MMAE-SMCC is composed of a potent mitotic and a tubulin inhibitor MMAE and a linker SMCC to make antibody agent conjugate.
<b>IC<sub>50</sub> &amp; Target</b>	Auristatin

### REFERENCES

---

[1]. Tang F, et al. One-pot N-glycosylation remodeling of IgG with non-natural sialylglycopeptides enables glycosite-specific and dual-payload antibody-drug conjugates. *Org Biomol Chem*. 2016 Oct 12;14(40):9501-9518.

---

**Caution: Product has not been fully validated for medical applications. For research use only.**

Tel: 609-228-6898

Fax: 609-228-5909

E-mail: [tech@MedChemExpress.com](mailto:tech@MedChemExpress.com)

Address: 1 Deer Park Dr, Suite Q, Monmouth Junction, NJ 08852, USA