



SZABO SCANDIC

Part of Europa Biosite

Produktinformation



Forschungsprodukte & Biochemikalien



Zellkultur & Verbrauchsmaterial



Diagnostik & molekulare Diagnostik



Laborgeräte & Service

Weitere Information auf den folgenden Seiten!
See the following pages for more information!



Lieferung & Zahlungsart

siehe unsere [Liefer- und Versandbedingungen](#)

Zuschläge

- Mindermengenzuschlag
- Trockeneiszuschlag
- Gefahrgutzuschlag
- Expressversand

SZABO-SCANDIC HandelsgmbH

Quellenstraße 110, A-1100 Wien

T. +43(0)1 489 3961-0

F. +43(0)1 489 3961-7

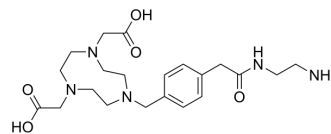
mail@szabo-scandic.com

www.szabo-scandic.com

[linkedin.com/company/szaboscandic](https://www.linkedin.com/company/szaboscandic) 

NH2-MPAA-NODA

Cat. No.:	HY-135859		
Molecular Formula:	C ₂₁ H ₃₃ N ₅ O ₅		
Molecular Weight:	435.52		
Target:	ADC Linker		
Pathway:	Antibody-drug Conjugate/ADC Related		
Storage:	Powder	-20°C	3 years
		4°C	2 years
	In solvent	-80°C	6 months
		-20°C	1 month



BIOLOGICAL ACTIVITY

Description	NH2-MPAA-NODA is a nitroveratryl-based photocleavable linker, it has a NODA motif and a methyl phenyl acetic acid (MPAA) backbone ^[1] . NH2-MPAA-NODA can be used as a radiolabel by labeling with ¹⁸ F-fluoride.
IC₅₀ & Target	IC50: Nitroveratryl-based photocleavable linker
In Vitro	<p>NH2-MPAA-NODA contains the 1,4,7-triazacyclononane-1,4-diacetate (NODA) motif with a methyl phenyl acetic acid (MPAA) backbone, and it has enough ability to form stable Al¹⁸F-chelates. The organ of luoroaluminates are easily accessible from the reaction of 1 and AlF₃.</p> <p>NH2-MPAA-NODA can be conjugated to some inhibitors/antagonists labeled with ¹⁸F for PET imaging of targeting tumors. It also can be used as a radiolabel of peptides^[1]</p> <p>MCE has not independently confirmed the accuracy of these methods. They are for reference only.</p>

Caution: Product has not been fully validated for medical applications. For research use only.

Tel: 609-228-6898

Fax: 609-228-5909

E-mail: tech@MedChemExpress.com

Address: 1 Deer Park Dr, Suite Q, Monmouth Junction, NJ 08852, USA