



SZABO SCANDIC

Part of Europa Biosite

Produktinformation



Forschungsprodukte & Biochemikalien



Zellkultur & Verbrauchsmaterial



Diagnostik & molekulare Diagnostik



Laborgeräte & Service

Weitere Information auf den folgenden Seiten!
See the following pages for more information!



Lieferung & Zahlungsart

siehe unsere [Liefer- und Versandbedingungen](#)

Zuschläge

- Mindermengenzuschlag
- Trockeneiszuschlag
- Gefahrgutzuschlag
- Expressversand

SZABO-SCANDIC HandelsgmbH

Quellenstraße 110, A-1100 Wien

T. +43(0)1 489 3961-0

F. +43(0)1 489 3961-7

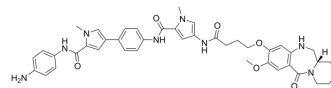
mail@szabo-scandic.com

www.szabo-scandic.com

[linkedin.com/company/szaboscandic](https://www.linkedin.com/company/szaboscandic) 

Aniline-MPB-amino-C3-PBD

Cat. No.:	HY-135900
CAS No.:	2412923-79-4
Molecular Formula:	C ₄₂ H ₄₆ N ₈ O ₆
Molecular Weight:	758.86
Target:	ADC Cytotoxin; Bacterial
Pathway:	Antibody-drug Conjugate/ADC Related; Anti-infection
Storage:	Please store the product under the recommended conditions in the Certificate of Analysis.



BIOLOGICAL ACTIVITY

Description	Aniline-MPB-amino-C3-PBD is a cytotoxic agent comprised non-alkylating group. Aniline-MPB-amino-C3-PBD is a sequence-selective DNA minor-groove binding agent. Aniline-MPB-amino-C3-PBD acts as the payload for ADCs. Antimicrobial activity ^[1] .
IC₅₀ & Target	Pyrrolobenzodiazepines
In Vitro	Aniline-MPB-amino-C3-PBD (compound 16) shows cytotoxicity with IC ₅₀ s of 77, 72, 79, 184.3, 61.5, and 145.6 nM for SW48, LIM1215, SW620, U138-MG, A431, and REH cells, respectively. Aniline-MPB-amino-C3-PBD effectively stabilises DNA with a degree of sequence-specificity. Aniline-MPB-amino-C3-PBD possesses potent anti-bacterial effects against the gram negative strain E. coli K12 with potency of 2 pg/mL determined ^[1] . MCE has not independently confirmed the accuracy of these methods. They are for reference only.

REFERENCES

[1]. David Edwin Thurston, et al. Polycyclic amides as cytotoxic agents. WO2020049286A1.

Caution: Product has not been fully validated for medical applications. For research use only.

Tel: 609-228-6898

Fax: 609-228-5909

E-mail: tech@MedChemExpress.com

Address: 1 Deer Park Dr, Suite Q, Monmouth Junction, NJ 08852, USA