



# SZABO SCANDIC

Part of Europa Biosite

## Produktinformation



Forschungsprodukte & Biochemikalien



Zellkultur & Verbrauchsmaterial



Diagnostik & molekulare Diagnostik



Laborgeräte & Service

Weitere Information auf den folgenden Seiten!  
See the following pages for more information!



### Lieferung & Zahlungsart

siehe unsere [Liefer- und Versandbedingungen](#)

### Zuschläge

- Mindermengenzuschlag
- Trockeneiszuschlag
- Gefahrgutzuschlag
- Expressversand

### SZABO-SCANDIC HandelsgmbH

Quellenstraße 110, A-1100 Wien

T. +43(0)1 489 3961-0

F. +43(0)1 489 3961-7

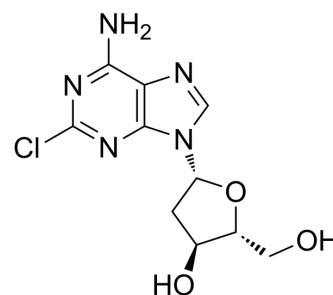
[mail@szabo-scandic.com](mailto:mail@szabo-scandic.com)

[www.szabo-scandic.com](http://www.szabo-scandic.com)

[linkedin.com/company/szaboscandic](https://www.linkedin.com/company/szaboscandic) 

## Cladribine (Standard)

Cat. No.:	HY-13599R
CAS No.:	4291-63-8
Molecular Formula:	C <sub>10</sub> H <sub>12</sub> ClN <sub>5</sub> O <sub>3</sub>
Molecular Weight:	285.69
Target:	Apoptosis; Adenosine Deaminase
Pathway:	Apoptosis; Metabolic Enzyme/Protease
Storage:	Please store the product under the recommended conditions in the Certificate of Analysis.



### BIOLOGICAL ACTIVITY

Description	Cladribine (Standard) is the analytical standard of Cladribine. This product is intended for research and analytical applications. Cladribine (2-Chloro-2'-deoxyadenosine), a purine nucleoside analog, is an orally active adenosine deaminase inhibitor. Cladribine functions as an inhibitor of DNA synthesis to block the repair of the damaged DNA. Cladribine can inhibit DNA methylation. Cladribine has anti-lymphoma activity. Cladribine can be used for the research of several hematologic malignancies and multiple sclerosis <sup>[1][2]</sup> .
IC <sub>50</sub> & Target	Adenosine deaminase <sup>[2]</sup>

### REFERENCES

- [1]. Linyan Xu, et al. Cladribine Induces ATF4 Mediated Apoptosis and Synergizes with SAHA in Diffuse Large B-Cell Lymphoma Cells. *Int J Med Sci.* 2020; 17(10): 1375–1384.
- [2]. Jian Ma, et al. Therapeutic potential of cladribine in combination with STAT3 inhibitor against multiple myeloma. *BMC Cancer.* 2011 Jun 16;11:255.
- [3]. Young Seop Chang, et al. MP28-10 COMBINED EFFECTS OF MELATONIN AND CLADRIBINE ON APOPTOSIS IN ISCHEMIA/REPERFUSION INJURY IN RAT BLADDER. *THE JOURNAL OF UROLOGY.* April 2016. 195 (4S): e375.
- [4]. Crystal D Hayes, et al. Chronic cladribine administration increases amyloid beta peptide generation and plaque burden in mice. *PLoS One.* 2012;7(10):e45841.
- [5]. Yeung, P. K. F., et al. Pharmacokinetics of Cladribine in a Rat Model Following Subcutaneous and Intra-arterial Injections. *Drug Metabol Drug Interact.* 2008;23(3-4):291-8.

**Caution: Product has not been fully validated for medical applications. For research use only.**

Tel: 609-228-6898

Fax: 609-228-5909

E-mail: tech@MedChemExpress.com

Address: 1 Deer Park Dr, Suite Q, Monmouth Junction, NJ 08852, USA