



# SZABO SCANDIC

Part of Europa Biosite

## Produktinformation



Forschungsprodukte & Biochemikalien



Zellkultur & Verbrauchsmaterial



Diagnostik & molekulare Diagnostik



Laborgeräte & Service

Weitere Information auf den folgenden Seiten!  
See the following pages for more information!



### Lieferung & Zahlungsart

siehe unsere [Liefer- und Versandbedingungen](#)

### Zuschläge

- Mindermengenzuschlag
- Trockeneiszuschlag
- Gefahrgutzuschlag
- Expressversand

### SZABO-SCANDIC HandelsgmbH

Quellenstraße 110, A-1100 Wien

T. +43(0)1 489 3961-0

F. +43(0)1 489 3961-7

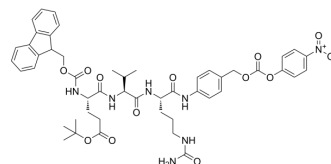
[mail@szabo-scandic.com](mailto:mail@szabo-scandic.com)

[www.szabo-scandic.com](http://www.szabo-scandic.com)

[linkedin.com/company/szaboscandic](https://www.linkedin.com/company/szaboscandic) 

## Fmoc-Glu-(Boc)-Val-Cit-PAB-PNP

<b>Cat. No.:</b>	HY-136154
<b>Molecular Formula:</b>	C <sub>49</sub> H <sub>57</sub> N <sub>7</sub> O <sub>13</sub>
<b>Molecular Weight:</b>	952.02
<b>Target:</b>	ADC Linker
<b>Pathway:</b>	Antibody-drug Conjugate/ADC Related
<b>Storage:</b>	-20°C, protect from light, stored under nitrogen * In solvent : -80°C, 6 months; -20°C, 1 month (protect from light, stored under nitrogen)



### SOLVENT & SOLUBILITY

<b>In Vitro</b>	DMSO : 180 mg/mL (189.07 mM; Need ultrasonic)					
	<b>Preparing Stock Solutions</b>	<b>Solvent</b>	<b>Mass</b>	<b>1 mg</b>	<b>5 mg</b>	<b>10 mg</b>
		<b>Concentration</b>				
		<b>1 mM</b>		1.0504 mL	5.2520 mL	10.5040 mL
		<b>5 mM</b>		0.2101 mL	1.0504 mL	2.1008 mL
	<b>10 mM</b>		0.1050 mL	0.5252 mL	1.0504 mL	
Please refer to the solubility information to select the appropriate solvent.						
<b>In Vivo</b>	1. Add each solvent one by one: 10% DMSO >> 90% corn oil Solubility: ≥ 4.5 mg/mL (4.73 mM); Clear solution					

### BIOLOGICAL ACTIVITY

<b>Description</b>	Fmoc-Glu-(Boc)-Val-Cit-PAB-PNP is a cleavable ADC linker used in the synthesis of antibody-drug conjugates (ADCs) <sup>[1]</sup> .	
<b>IC<sub>50</sub> &amp; Target</b>	Protease Cleavable	Cleavable
<b>In Vitro</b>	ADCs are comprised of an antibody to which is attached an ADC cytotoxin through an ADC linker <sup>[1]</sup> . MCE has not independently confirmed the accuracy of these methods. They are for reference only.	

### REFERENCES

[1]. Beck A, et al. Strategies and challenges for the next generation of antibody-drug conjugates. Nat Rev Drug Discov. 2017 May;16(5):315-337.

---

**Caution: Product has not been fully validated for medical applications. For research use only.**

Tel: 609-228-6898

Fax: 609-228-5909

E-mail: [tech@MedChemExpress.com](mailto:tech@MedChemExpress.com)

Address: 1 Deer Park Dr, Suite Q, Monmouth Junction, NJ 08852, USA