



SZABO SCANDIC

Part of Europa Biosite

Produktinformation



Forschungsprodukte & Biochemikalien



Zellkultur & Verbrauchsmaterial



Diagnostik & molekulare Diagnostik



Laborgeräte & Service

Weitere Information auf den folgenden Seiten!
See the following pages for more information!



Lieferung & Zahlungsart

siehe unsere [Liefer- und Versandbedingungen](#)

Zuschläge

- Mindermengenzuschlag
- Trockeneiszuschlag
- Gefahrgutzuschlag
- Expressversand

SZABO-SCANDIC HandelsgmbH

Quellenstraße 110, A-1100 Wien

T. +43(0)1 489 3961-0

F. +43(0)1 489 3961-7

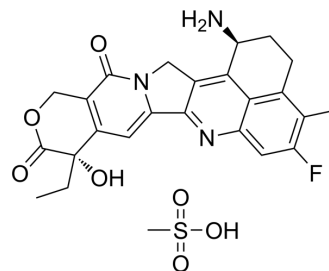
mail@szabo-scandic.com

www.szabo-scandic.com

[linkedin.com/company/szaboscandic](https://www.linkedin.com/company/szaboscandic) 

Exatecan mesylate (GMP)

Cat. No.:	HY-13631AG
CAS No.:	169869-90-3
Molecular Formula:	C ₂₅ H ₂₆ FN ₃ O ₇ S
Molecular Weight:	531.55
Target:	Topoisomerase; ADC Cytotoxin
Pathway:	Cell Cycle/DNA Damage; Antibody-drug Conjugate/ADC Related
Storage:	Please store the product under the recommended conditions in the Certificate of Analysis.



BIOLOGICAL ACTIVITY

Description	Exatecan mesylate (DX8951f) GMP is a GMP-class Exatecan (HY-13631). Exatecan is a DNA topoisomerase I inhibitor, with an IC ₅₀ of 2.2 μM (0.975 μg/mL), and can be used in cancer research.
IC₅₀ & Target	IC ₅₀ : 2.2 μM (topoisomerase I) ^[1]

CUSTOMER VALIDATION

- Mol Pharm. 2022 Dec 2.
- Pharmaceuticals. 2021, 14(3), 247.
- Patent. US20220162323A1.
- Patent. US20210009719A1.

See more customer validations on www.MedChemExpress.com

REFERENCES

- [1]. Mitsui I, et al. A new water-soluble camptothecin derivative, DX-8951f, exhibits potent antitumor activity against human tumors in vitro and in vivo. *Jpn J Cancer Res.* 1995 Aug;86(8):776-82.
- [2]. Sun FX, et al. Efficacy of camptothecin analog DX-8951f (Exatecan Mesylate) on human pancreatic cancer in an orthotopic metastatic model. *Cancer Res.* 2003 Jan 1;63(1):80-5.
- [3]. Joto N, et al. DX-8951f, a water-soluble camptothecin analog, exhibits potent antitumor activity against a human lung cancer cell line and its SN-38-resistant variant. *Int J Cancer.* 1997 Aug 7;72(4):680-6.

Caution: Product has not been fully validated for medical applications. For research use only.

Tel: 609-228-6898

Fax: 609-228-5909

E-mail: tech@MedChemExpress.com

Address: 1 Deer Park Dr, Suite Q, Monmouth Junction, NJ 08852, USA