



SZABO SCANDIC

Part of Europa Biosite

Produktinformation



Forschungsprodukte & Biochemikalien



Zellkultur & Verbrauchsmaterial



Diagnostik & molekulare Diagnostik



Laborgeräte & Service

Weitere Information auf den folgenden Seiten!
See the following pages for more information!



Lieferung & Zahlungsart

siehe unsere [Liefer- und Versandbedingungen](#)

Zuschläge

- Mindermengenzuschlag
- Trockeneiszuschlag
- Gefahrgutzuschlag
- Expressversand

SZABO-SCANDIC HandelsgmbH

Quellenstraße 110, A-1100 Wien

T. +43(0)1 489 3961-0

F. +43(0)1 489 3961-7

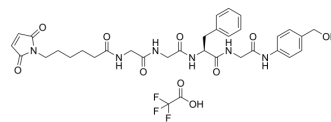
mail@szabo-scandic.com

www.szabo-scandic.com

[linkedin.com/company/szaboscandic](https://www.linkedin.com/company/szaboscandic) 

Mc-Gly-Gly-Phe-Gly-PAB-OH TFA

Cat. No.: HY-136432A
Molecular Formula: C₃₄H₃₉F₃N₆O₁₀
Molecular Weight: 748.7
Target: ADC Linker
Pathway: Antibody-drug Conjugate/ADC Related
Storage: Sealed storage, away from moisture and light
 Powder -80°C 2 years
 -20°C 1 year



* In solvent : -80°C, 6 months; -20°C, 1 month (sealed storage, away from moisture and light)

SOLVENT & SOLUBILITY

In Vitro	DMSO : 250 mg/mL (333.91 mM; Need ultrasonic)				
		Solvent Mass	1 mg	5 mg	10 mg
Preparing Stock Solutions	Concentration				
	1 mM		1.3356 mL	6.6782 mL	13.3565 mL
	5 mM		0.2671 mL	1.3356 mL	2.6713 mL
	10 mM		0.1336 mL	0.6678 mL	1.3356 mL

Please refer to the solubility information to select the appropriate solvent.

In Vivo	1. Add each solvent one by one: 10% DMSO >> 40% PEG300 >> 5% Tween-80 >> 45% saline Solubility: ≥ 2.08 mg/mL (2.78 mM); Clear solution 2. Add each solvent one by one: 10% DMSO >> 90% (20% SBE-β-CD in saline) Solubility: ≥ 2.08 mg/mL (2.78 mM); Clear solution				
---------	---	--	--	--	--

BIOLOGICAL ACTIVITY

Description	Mc-Gly-Gly-Phe-Gly-PAB-OH (Mc-GGFG-PAB-OH) TFA is a cleavable ADC linker used for antibody-drug conjugates (ADCs).
IC₅₀ & Target	Cleavable Linker
In Vitro	ADCs are comprised of an antibody to which is attached an ADC cytotoxin through an ADC linker. MCE has not independently confirmed the accuracy of these methods. They are for reference only.

Caution: Product has not been fully validated for medical applications. For research use only.

Tel: 609-228-6898

Fax: 609-228-5909

E-mail: tech@MedChemExpress.com

Address: 1 Deer Park Dr, Suite Q, Monmouth Junction, NJ 08852, USA