



# SZABO SCANDIC

Part of Europa Biosite

## Produktinformation



Forschungsprodukte & Biochemikalien



Zellkultur & Verbrauchsmaterial



Diagnostik & molekulare Diagnostik



Laborgeräte & Service

Weitere Information auf den folgenden Seiten!  
See the following pages for more information!



### Lieferung & Zahlungsart

siehe unsere [Liefer- und Versandbedingungen](#)

### Zuschläge

- Mindermengenzuschlag
- Trockeneiszuschlag
- Gefahrgutzuschlag
- Expressversand

### SZABO-SCANDIC HandelsgmbH

Quellenstraße 110, A-1100 Wien

T. +43(0)1 489 3961-0

F. +43(0)1 489 3961-7

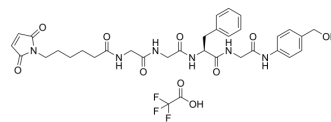
[mail@szabo-scandic.com](mailto:mail@szabo-scandic.com)

[www.szabo-scandic.com](http://www.szabo-scandic.com)

[linkedin.com/company/szaboscandic](https://www.linkedin.com/company/szaboscandic) 

## Mc-Gly-Gly-Phe-Gly-PAB-OH TFA

**Cat. No.:** HY-136432A  
**Molecular Formula:** C<sub>34</sub>H<sub>39</sub>F<sub>3</sub>N<sub>6</sub>O<sub>10</sub>  
**Molecular Weight:** 748.7  
**Target:** ADC Linker  
**Pathway:** Antibody-drug Conjugate/ADC Related  
**Storage:** Sealed storage, away from moisture and light  
 Powder -80°C 2 years  
 -20°C 1 year



\* In solvent : -80°C, 6 months; -20°C, 1 month (sealed storage, away from moisture and light)

### SOLVENT & SOLUBILITY

In Vitro	DMSO : 250 mg/mL (333.91 mM; Need ultrasonic)				
		Solvent Mass	1 mg	5 mg	10 mg
Preparing Stock Solutions	Concentration				
	1 mM		1.3356 mL	6.6782 mL	13.3565 mL
	5 mM		0.2671 mL	1.3356 mL	2.6713 mL
	10 mM		0.1336 mL	0.6678 mL	1.3356 mL
Please refer to the solubility information to select the appropriate solvent.					
In Vivo	1. Add each solvent one by one: 10% DMSO >> 40% PEG300 >> 5% Tween-80 >> 45% saline Solubility: ≥ 2.08 mg/mL (2.78 mM); Clear solution  2. Add each solvent one by one: 10% DMSO >> 90% (20% SBE-β-CD in saline) Solubility: ≥ 2.08 mg/mL (2.78 mM); Clear solution				

### BIOLOGICAL ACTIVITY

<b>Description</b>	Mc-Gly-Gly-Phe-Gly-PAB-OH (Mc-GGFG-PAB-OH) TFA is a cleavable ADC linker used for antibody-drug conjugates (ADCs).
<b>IC<sub>50</sub> &amp; Target</b>	Cleavable Linker
<b>In Vitro</b>	ADCs are comprised of an antibody to which is attached an ADC cytotoxin through an ADC linker. MCE has not independently confirmed the accuracy of these methods. They are for reference only.

---

**Caution: Product has not been fully validated for medical applications. For research use only.**

Tel: 609-228-6898

Fax: 609-228-5909

E-mail: [tech@MedChemExpress.com](mailto:tech@MedChemExpress.com)

Address: 1 Deer Park Dr, Suite Q, Monmouth Junction, NJ 08852, USA