



SZABO SCANDIC

Part of Europa Biosite

Produktinformation



Forschungsprodukte & Biochemikalien



Zellkultur & Verbrauchsmaterial



Diagnostik & molekulare Diagnostik



Laborgeräte & Service

Weitere Information auf den folgenden Seiten!
See the following pages for more information!



Lieferung & Zahlungsart

siehe unsere [Liefer- und Versandbedingungen](#)

Zuschläge

- Mindermengenzuschlag
- Trockeneiszuschlag
- Gefahrgutzuschlag
- Expressversand

SZABO-SCANDIC HandelsgmbH

Quellenstraße 110, A-1100 Wien

T. +43(0)1 489 3961-0

F. +43(0)1 489 3961-7

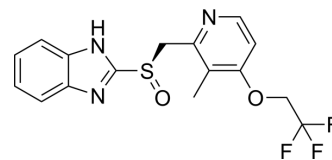
mail@szabo-scandic.com

www.szabo-scandic.com

[linkedin.com/company/szaboscandic](https://www.linkedin.com/company/szaboscandic) 

(R)-Lansoprazole (Standard)

Cat. No.:	HY-13662BR
CAS No.:	138530-94-6
Molecular Formula:	C ₁₆ H ₁₄ F ₃ N ₃ O ₂ S
Molecular Weight:	369.36
Target:	Proton Pump
Pathway:	Membrane Transporter/Ion Channel
Storage:	Please store the product under the recommended conditions in the Certificate of Analysis.



BIOLOGICAL ACTIVITY

Description

(R)-Lansoprazole (Standard) is the analytical standard of (R)-Lansoprazole. This product is intended for research and analytical applications. (R)-Lansoprazole is the R enantiomer of Lansoprazole, Lansoprazole (AG 1749) is an orally active proton pump inhibitor which prevents the stomach from producing acid. Lansoprazole (AG 1749) is a potent brain penetrant neutral sphingomyelinase (N-SMase) inhibitor (exosome inhibitor)^{[1][2]}.

REFERENCES

- [1]. Kokufu, T., et al., Effects of lansoprazole on pharmacokinetics and metabolism of theophylline. *Eur J Clin Pharmacol*, 1995. 48(5): p. 391-5.
- [2]. Huarui Zhang, et al. Advances in the discovery of exosome inhibitors in cancer. *J Enzyme Inhib Med Chem*. 2020 Dec;35(1):1322-1330.
- [3]. M Miura, et al. Pharmacokinetic differences between the enantiomers of lansoprazole and its metabolite, 5-hydroxylansoprazole, in relation to CYP2C19 genotypes. *Eur J Clin Pharmacol*. 2004 Nov;60(9):623-8.

Caution: Product has not been fully validated for medical applications. For research use only.

Tel: 609-228-6898

Fax: 609-228-5909

E-mail: tech@MedChemExpress.com

Address: 1 Deer Park Dr, Suite Q, Monmouth Junction, NJ 08852, USA