



SZABO SCANDIC

Part of Europa Biosite

Produktinformation



Forschungsprodukte & Biochemikalien



Zellkultur & Verbrauchsmaterial



Diagnostik & molekulare Diagnostik



Laborgeräte & Service

Weitere Information auf den folgenden Seiten!
See the following pages for more information!



Lieferung & Zahlungsart

siehe unsere [Liefer- und Versandbedingungen](#)

Zuschläge

- Mindermengenzuschlag
- Trockeneiszuschlag
- Gefahrgutzuschlag
- Expressversand

SZABO-SCANDIC HandelsgmbH

Quellenstraße 110, A-1100 Wien

T. +43(0)1 489 3961-0

F. +43(0)1 489 3961-7

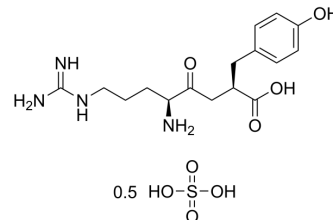
mail@szabo-scandic.com

www.szabo-scandic.com

[linkedin.com/company/szaboscandic](https://www.linkedin.com/company/szaboscandic) 

Arphamenine B hemisulfate

Cat. No.:	HY-136887
CAS No.:	144110-38-3
Molecular Formula:	C ₁₆ H ₂₄ N ₄ O ₄ ·1/2H ₂ O ₄ S
Molecular Weight:	770.85
Target:	Others
Pathway:	Others
Storage:	Please store the product under the recommended conditions in the Certificate of Analysis.



BIOLOGICAL ACTIVITY

Description

Arphamenine B (hemisulfate) is a Zn²⁺-dependent exopeptidase that selectively removes arginine and/or lysine residues from the NH₂-terminus of several peptide substrates. Arphamenine B (hemisulfate) Arphamenine B (hemisulfate) is an inhibitor of aminopeptidase B that can be isolated from bacteria. Arphamenine B (hemisulfate) enhances the immune response and is used to characterize novel proteases^{[1][2][3]}.

REFERENCES

- [1]. Foulon T, et al. Aminopeptidase B (EC 3.4.11.6). *Int J Biochem Cell Biol.* 1999 Jul;31(7):747-50.
- [2]. Umezawa H, et al. Arphamenines A and B, new inhibitors of aminopeptidase B, produced by bacteria. *J Antibiot (Tokyo).* 1983 Nov;36(11):1572-5
- [3]. Kubo H, et al. Involvement of sperm proteases in the binding of sperm to the vitelline envelope in *Xenopus laevis*. *Zoolog Sci.* 2008 Jan;25(1):80-7.

Caution: Product has not been fully validated for medical applications. For research use only.

Tel: 609-228-6898

Fax: 609-228-5909

E-mail: tech@MedChemExpress.com

Address: 1 Deer Park Dr, Suite Q, Monmouth Junction, NJ 08852, USA