



SZABO SCANDIC

Part of Europa Biosite

Produktinformation



Forschungsprodukte & Biochemikalien



Zellkultur & Verbrauchsmaterial



Diagnostik & molekulare Diagnostik



Laborgeräte & Service

Weitere Information auf den folgenden Seiten!
See the following pages for more information!



Lieferung & Zahlungsart

siehe unsere [Liefer- und Versandbedingungen](#)

Zuschläge

- Mindermengenzuschlag
- Trockeneiszuschlag
- Gefahrgutzuschlag
- Expressversand

SZABO-SCANDIC HandelsgmbH

Quellenstraße 110, A-1100 Wien

T. +43(0)1 489 3961-0

F. +43(0)1 489 3961-7

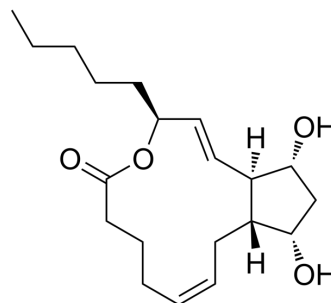
mail@szabo-scandic.com

www.szabo-scandic.com

[linkedin.com/company/szaboscandic](https://www.linkedin.com/company/szaboscandic) 

PGF2 α 1,15-lactone

Cat. No.:	HY-137412
CAS No.:	55314-49-3
Molecular Formula:	C ₂₀ H ₃₂ O ₄
Molecular Weight:	336.47
Target:	Others
Pathway:	Others
Storage:	Please store the product under the recommended conditions in the Certificate of Analysis.



BIOLOGICAL ACTIVITY

Description	PGF2 α 1,15-lactone (Prostaglandin F2 α 1,15-lactone) is a lipid-soluble internal ester of PGF2 α . PGF2 α 1,15-lactone decreases menstrual cycle lengths in non-pregnant rhesus monkeys. PGF2 α 1,15-lactone terminates early pregnancy in the monkey ^[1] .
In Vivo	PGF2 α 1,15-lactone (5 mg for i.v.; 3 mg for intramuscularly) terminates early pregnancy in the monkey ^[1] . MCE has not independently confirmed the accuracy of these methods. They are for reference only.
Animal Model:	Rhesus monkey (trimester pregnant) ^[1]
Dosage:	5 mg for i.v.; 3 mg for intramuscularly
Administration:	IV on days 30 and 31, 31 and 32, or 33 and 34; Intramuscularly on days 29 and 30, 30 and 31, or 33 and 34
Result:	Aborted between 36 and 48 hr after treatment, Within 10 minutes after treatment there was a significant increase in uterine tone and frequency of contractions.

REFERENCES

[1]. Spilman CH, et al. Effects of PGF2 α and PGF2 α 1,15 lactone on the corpus luteum and on early pregnancy in the rhesus monkey. Prostaglandins. 1977 Sep;14(3):477-88.

Caution: Product has not been fully validated for medical applications. For research use only.

Tel: 609-228-6898

Fax: 609-228-5909

E-mail: tech@MedChemExpress.com

Address: 1 Deer Park Dr, Suite Q, Monmouth Junction, NJ 08852, USA