



SZABO SCANDIC

Part of Europa Biosite

Produktinformation



Forschungsprodukte & Biochemikalien



Zellkultur & Verbrauchsmaterial



Diagnostik & molekulare Diagnostik



Laborgeräte & Service

Weitere Information auf den folgenden Seiten!
See the following pages for more information!



Lieferung & Zahlungsart

siehe unsere [Liefer- und Versandbedingungen](#)

Zuschläge

- Mindermengenzuschlag
- Trockeneiszuschlag
- Gefahrgutzuschlag
- Expressversand

SZABO-SCANDIC HandelsgmbH

Quellenstraße 110, A-1100 Wien

T. +43(0)1 489 3961-0

F. +43(0)1 489 3961-7

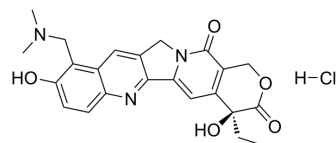
mail@szabo-scandic.com

www.szabo-scandic.com

[linkedin.com/company/szaboscandic](https://www.linkedin.com/company/szaboscandic) 

Topotecan hydrochloride (Standard)

Cat. No.:	HY-13768AR
CAS No.:	119413-54-6
Molecular Formula:	C ₂₃ H ₂₄ ClN ₃ O ₅
Molecular Weight:	457.91
Target:	Apoptosis; Autophagy; Topoisomerase
Pathway:	Apoptosis; Autophagy; Cell Cycle/DNA Damage
Storage:	Please store the product under the recommended conditions in the Certificate of Analysis.



BIOLOGICAL ACTIVITY

Description	Topotecan (hydrochloride) (Standard) is the analytical standard of Topotecan (hydrochloride). This product is intended for research and analytical applications. Topotecan Hydrochloride (SKF 104864A Hydrochloride) is a Topoisomerase I inhibitor with potent antineoplastic activities.
IC ₅₀ & Target	Topoisomerase I ^[1]

REFERENCES

- [1]. Zhang FL, et al. PLoS One. 2013 Nov 26;8(11):e81815. Topoisomerase I inhibitors, Shikonin and Topotecan, inhibit growth and induce apoptosis of glioma cells and glioma stem cells.
- [2]. Kumar S, et al. Metronomic oral topotecan with pazopanib is an active antiangiogenic regimen in mouse models of aggressive pediatric solid tumor. Clin Cancer Res. 2011 Sep 1;17(17):5656-67.

Caution: Product has not been fully validated for medical applications. For research use only.

Tel: 609-228-6898

Fax: 609-228-5909

E-mail: tech@MedChemExpress.com

Address: 1 Deer Park Dr, Suite Q, Monmouth Junction, NJ 08852, USA