



SZABO SCANDIC

Part of Europa Biosite

Produktinformation



Forschungsprodukte & Biochemikalien



Zellkultur & Verbrauchsmaterial



Diagnostik & molekulare Diagnostik



Laborgeräte & Service

Weitere Information auf den folgenden Seiten!
See the following pages for more information!



Lieferung & Zahlungsart

siehe unsere [Liefer- und Versandbedingungen](#)

Zuschläge

- Mindermengenzuschlag
- Trockeneiszuschlag
- Gefahrgutzuschlag
- Expressversand

SZABO-SCANDIC HandelsgmbH

Quellenstraße 110, A-1100 Wien

T. +43(0)1 489 3961-0

F. +43(0)1 489 3961-7

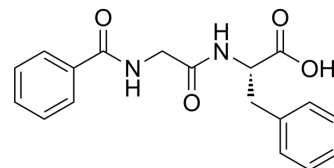
mail@szabo-scandic.com

www.szabo-scandic.com

[linkedin.com/company/szaboscandic](https://www.linkedin.com/company/szaboscandic) 

Hippuryl-L-phenylalanine

Cat. No.:	HY-137840	
CAS No.:	744-59-2	
Molecular Formula:	C ₁₈ H ₁₈ N ₂ O ₄	
Molecular Weight:	326.35	
Target:	Carboxypeptidase	
Pathway:	Metabolic Enzyme/Protease	
Storage:	Powder	-20°C 3 years
	In solvent	-80°C 6 months
		-20°C 1 month



SOLVENT & SOLUBILITY

In Vitro

DMSO : 250 mg/mL (766.05 mM; Need ultrasonic)

Concentration	Solvent	Mass		
		1 mg	5 mg	10 mg
Preparing Stock Solutions	1 mM	3.0642 mL	15.3210 mL	30.6419 mL
	5 mM	0.6128 mL	3.0642 mL	6.1284 mL
	10 mM	0.3064 mL	1.5321 mL	3.0642 mL

Please refer to the solubility information to select the appropriate solvent.

BIOLOGICAL ACTIVITY

Description

Hippuryl-L-phenylalanine is a substrate of carboxypeptidase. Carboxypeptidase is a protease enzyme that related with obesity, epilepsy and neurodegeneration. Hippuryl-L-phenylalanine can be used for the determination of carboxypeptidase activity^{[1][2]}.

REFERENCES

- [1]. Serafin WE, et al. Carboxypeptidase A in mouse mast cells. Identification, characterization, and use as a differentiation marker. *J Immunol.* 1987 Dec 1;139(11):3771-6.
- [2]. Sapio MR, Fricker LD. Carboxypeptidases in disease: insights from peptidomic studies. *Proteomics Clin Appl.* 2014 Jun;8(5-6):327-37.

Caution: Product has not been fully validated for medical applications. For research use only.

Tel: 609-228-6898

Fax: 609-228-5909

E-mail: tech@MedChemExpress.com

Address: 1 Deer Park Dr, Suite Q, Monmouth Junction, NJ 08852, USA