



SZABO SCANDIC

Part of Europa Biosite

Produktinformation



Forschungsprodukte & Biochemikalien



Zellkultur & Verbrauchsmaterial



Diagnostik & molekulare Diagnostik



Laborgeräte & Service

Weitere Information auf den folgenden Seiten!
See the following pages for more information!



Lieferung & Zahlungsart

siehe unsere [Liefer- und Versandbedingungen](#)

Zuschläge

- Mindermengenzuschlag
- Trockeneiszuschlag
- Gefahrgutzuschlag
- Expressversand

SZABO-SCANDIC HandelsgmbH

Quellenstraße 110, A-1100 Wien

T. +43(0)1 489 3961-0

F. +43(0)1 489 3961-7

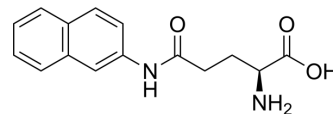
mail@szabo-scandic.com

www.szabo-scandic.com

[linkedin.com/company/szaboscandic](https://www.linkedin.com/company/szaboscandic) 

γ -Glutamyl- β -naphthylamide

Cat. No.:	HY-137870
CAS No.:	14525-44-1
Molecular Formula:	C ₁₅ H ₁₆ N ₂ O ₃
Molecular Weight:	272.3
Target:	Biochemical Assay Reagents
Pathway:	Others
Storage:	Please store the product under the recommended conditions in the Certificate of Analysis.



BIOLOGICAL ACTIVITY

Description

γ -Glutamyl- β -naphthylamide is a substrate for γ -glutamine peptidase. γ -Glutamyl- β -naphthylamide is specifically recognized and the peptide chain is cleaved. γ -Glutamyl- β -naphthylamide can be used to distinguish between gonococci and meningococci^[1].

REFERENCES

[1]. Doyle R et al. Nedjat-Haiem F, Keller KF, Frasch CE. 1984. Diagnostic value of interactions between members of the family Neisseriaceae and lectins. J Clin Microbiol 19

Caution: Product has not been fully validated for medical applications. For research use only.

Tel: 609-228-6898

Fax: 609-228-5909

E-mail: tech@MedChemExpress.com

Address: 1 Deer Park Dr, Suite Q, Monmouth Junction, NJ 08852, USA