



SZABO SCANDIC

Part of Europa Biosite

Produktinformation



Forschungsprodukte & Biochemikalien



Zellkultur & Verbrauchsmaterial



Diagnostik & molekulare Diagnostik



Laborgeräte & Service

Weitere Information auf den folgenden Seiten!
See the following pages for more information!



Lieferung & Zahlungsart

siehe unsere [Liefer- und Versandbedingungen](#)

Zuschläge

- Mindermengenzuschlag
- Trockeneiszuschlag
- Gefahrgutzuschlag
- Expressversand

SZABO-SCANDIC HandelsgmbH

Quellenstraße 110, A-1100 Wien

T. +43(0)1 489 3961-0

F. +43(0)1 489 3961-7

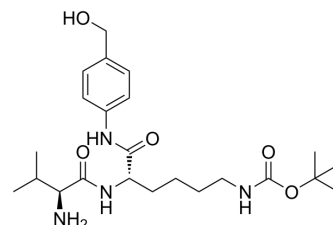
mail@szabo-scandic.com

www.szabo-scandic.com

[linkedin.com/company/szaboscandic](https://www.linkedin.com/company/szaboscandic) 

PAB-Val-Lys-Boc

Cat. No.:	HY-138651		
CAS No.:	1432969-86-2		
Molecular Formula:	C ₂₃ H ₃₈ N ₄ O ₅		
Molecular Weight:	450.57		
Target:	ADC Linker		
Pathway:	Antibody-drug Conjugate/ADC Related		
Storage:	Powder	-20°C	3 years
		4°C	2 years
	In solvent	-80°C	6 months
		-20°C	1 month



SOLVENT & SOLUBILITY

In Vitro	DMSO : 125 mg/mL (277.43 mM; Need ultrasonic)				
		Solvent	Mass		
		Concentration	1 mg	5 mg	
	Preparing Stock Solutions		10 mg		
		1 mM	2.2194 mL	11.0971 mL	22.1941 mL
		5 mM	0.4439 mL	2.2194 mL	4.4388 mL
		10 mM	0.2219 mL	1.1097 mL	2.2194 mL
Please refer to the solubility information to select the appropriate solvent.					
In Vivo	<ol style="list-style-type: none"> Add each solvent one by one: 10% DMSO >> 40% PEG300 >> 5% Tween-80 >> 45% saline Solubility: ≥ 2.08 mg/mL (4.62 mM); Clear solution Add each solvent one by one: 10% DMSO >> 90% (20% SBE-β-CD in saline) Solubility: ≥ 2.08 mg/mL (4.62 mM); Clear solution Add each solvent one by one: 10% DMSO >> 90% corn oil Solubility: ≥ 2.08 mg/mL (4.62 mM); Clear solution 				

BIOLOGICAL ACTIVITY

Description	PAB-Val-Lys-Boc is a cleavable ADC linker used in the synthesis of antibody-drug conjugates (ADCs) for stimulating an immune response ^[1] .	
IC₅₀ & Target	Protease Cleavable	Cleavable

REFERENCES

Caution: Product has not been fully validated for medical applications. For research use only.

Tel: 609-228-6898

Fax: 609-228-5909

E-mail: tech@MedChemExpress.com

Address: 1 Deer Park Dr, Suite Q, Monmouth Junction, NJ 08852, USA