



# SZABO SCANDIC

Part of Europa Biosite

## Produktinformation



Forschungsprodukte & Biochemikalien



Zellkultur & Verbrauchsmaterial



Diagnostik & molekulare Diagnostik



Laborgeräte & Service

Weitere Information auf den folgenden Seiten!  
See the following pages for more information!



### Lieferung & Zahlungsart

siehe unsere [Liefer- und Versandbedingungen](#)

### Zuschläge

- Mindermengenzuschlag
- Trockeneiszuschlag
- Gefahrgutzuschlag
- Expressversand

### SZABO-SCANDIC HandelsgmbH

Quellenstraße 110, A-1100 Wien

T. +43(0)1 489 3961-0

F. +43(0)1 489 3961-7

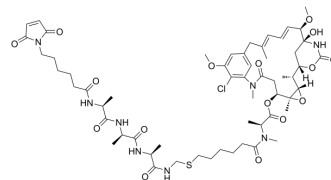
[mail@szabo-scandic.com](mailto:mail@szabo-scandic.com)

[www.szabo-scandic.com](http://www.szabo-scandic.com)

[linkedin.com/company/szaboscandic](https://www.linkedin.com/company/szaboscandic) 

## DM21

<b>Cat. No.:</b>	HY-139441
<b>CAS No.:</b>	2243689-80-5
<b>Molecular Formula:</b>	C <sub>58</sub> H <sub>83</sub> ClN <sub>8</sub> O <sub>16</sub> S
<b>Molecular Weight:</b>	1215.84
<b>Target:</b>	Drug-Linker Conjugates for ADC
<b>Pathway:</b>	Antibody-drug Conjugate/ADC Related
<b>Storage:</b>	Powder    -20°C    3 years In solvent   -80°C    6 months -20°C    1 month



### SOLVENT & SOLUBILITY

#### In Vitro

DMSO : 100 mg/mL (82.25 mM; Need ultrasonic)

Preparing Stock Solutions	Solvent Concentration	Mass		
		1 mg	5 mg	10 mg
	1 mM	0.8225 mL	4.1124 mL	8.2248 mL
	5 mM	0.1645 mL	0.8225 mL	1.6450 mL
	10 mM	0.0822 mL	0.4112 mL	0.8225 mL

Please refer to the solubility information to select the appropriate solvent.

#### In Vivo

- Add each solvent one by one: 10% DMSO >> 40% PEG300 >> 5% Tween-80 >> 45% saline  
Solubility: ≥ 0.83 mg/mL (0.68 mM); Clear solution
- Add each solvent one by one: 10% DMSO >> 90% (20% SBE-β-CD in saline)  
Solubility: ≥ 0.83 mg/mL (0.68 mM); Clear solution
- Add each solvent one by one: 10% DMSO >> 90% corn oil  
Solubility: ≥ 0.83 mg/mL (0.68 mM); Clear solution

### BIOLOGICAL ACTIVITY

#### Description

DM21 is a conjugate of a cleavable ADC agent and a linker (ADC linker) used in the synthesis of antibody-drug conjugates (ADCs)<sup>[1]</sup>.

#### In Vitro

ADCs are comprised of an antibody to which is attached an ADC cytotoxin through an ADC linker. MCE has not independently confirmed the accuracy of these methods. They are for reference only.

### REFERENCES

**Caution: Product has not been fully validated for medical applications. For research use only.**

Tel: 609-228-6898

Fax: 609-228-5909

E-mail: [tech@MedChemExpress.com](mailto:tech@MedChemExpress.com)

Address: 1 Deer Park Dr, Suite Q, Monmouth Junction, NJ 08852, USA