



SZABO SCANDIC

Part of Europa Biosite

Produktinformation



Forschungsprodukte & Biochemikalien



Zellkultur & Verbrauchsmaterial



Diagnostik & molekulare Diagnostik



Laborgeräte & Service

Weitere Information auf den folgenden Seiten!
See the following pages for more information!



Lieferung & Zahlungsart

siehe unsere [Liefer- und Versandbedingungen](#)

Zuschläge

- Mindermengenzuschlag
- Trockeneiszuschlag
- Gefahrgutzuschlag
- Expressversand

SZABO-SCANDIC HandelsgmbH

Quellenstraße 110, A-1100 Wien

T. +43(0)1 489 3961-0

F. +43(0)1 489 3961-7

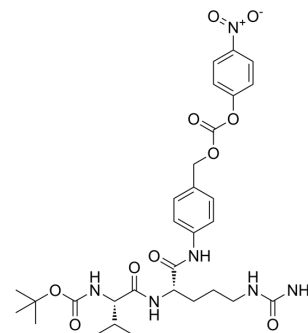
mail@szabo-scandic.com

www.szabo-scandic.com

[linkedin.com/company/szaboscandic](https://www.linkedin.com/company/szaboscandic) 

Boc-Val-Cit-PAB-PNP

Cat. No.:	HY-141142
CAS No.:	870487-10-8
Molecular Formula:	C ₃₀ H ₄₀ N ₆ O ₁₀
Molecular Weight:	644.67
Target:	ADC Linker
Pathway:	Antibody-drug Conjugate/ADC Related
Storage:	-20°C, stored under nitrogen, away from moisture * In solvent : -80°C, 6 months; -20°C, 1 month (stored under nitrogen, away from moisture)



SOLVENT & SOLUBILITY

In Vitro	DMSO : 100 mg/mL (155.12 mM; Need ultrasonic)					
	Preparing Stock Solutions	Solvent Concentration	Mass			
			1 mg	5 mg	10 mg	
			1 mM	1.5512 mL	7.7559 mL	15.5118 mL
			5 mM	0.3102 mL	1.5512 mL	3.1024 mL
10 mM	0.1551 mL	0.7756 mL	1.5512 mL			
Please refer to the solubility information to select the appropriate solvent.						
In Vivo	1. Add each solvent one by one: 10% DMSO >> 90% (20% SBE-β-CD in saline) Solubility: ≥ 2.08 mg/mL (3.23 mM); Clear solution					
	2. Add each solvent one by one: 10% DMSO >> 90% corn oil Solubility: ≥ 2.08 mg/mL (3.23 mM); Clear solution					

BIOLOGICAL ACTIVITY

Description	Boc-Val-Cit-PAB-PNP is a cleavable ADC linker used in the synthesis of antibody-drug conjugates (ADCs) ^[1] .	
IC ₅₀ & Target	Protease Cleavable Linker	Cleavable Linker
In Vitro	ADCs are comprised of an antibody to which is attached an ADC cytotoxin through an ADC linker ^[1] . MCE has not independently confirmed the accuracy of these methods. They are for reference only.	

REFERENCES

Caution: Product has not been fully validated for medical applications. For research use only.

Tel: 609-228-6898

Fax: 609-228-5909

E-mail: tech@MedChemExpress.com

Address: 1 Deer Park Dr, Suite Q, Monmouth Junction, NJ 08852, USA