



SZABO SCANDIC

Part of Europa Biosite

Produktinformation



Forschungsprodukte & Biochemikalien



Zellkultur & Verbrauchsmaterial



Diagnostik & molekulare Diagnostik



Laborgeräte & Service

Weitere Information auf den folgenden Seiten!
See the following pages for more information!



Lieferung & Zahlungsart

siehe unsere [Liefer- und Versandbedingungen](#)

Zuschläge

- Mindermengenzuschlag
- Trockeneiszuschlag
- Gefahrgutzuschlag
- Expressversand

SZABO-SCANDIC HandelsgmbH

Quellenstraße 110, A-1100 Wien

T. +43(0)1 489 3961-0

F. +43(0)1 489 3961-7

mail@szabo-scandic.com

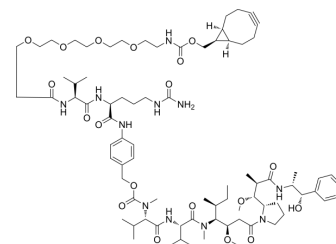
www.szabo-scandic.com

[linkedin.com/company/szaboscandic](https://www.linkedin.com/company/szaboscandic) 

endo-BCN-PEG4-Val-Cit-PAB-MMAE

Cat. No.:	HY-141155
CAS No.:	2762519-08-2
Molecular Formula:	C ₈₀ H ₁₂₇ N ₁₁ O ₁₉
Molecular Weight:	1546.93
Target:	Drug-Linker Conjugates for ADC
Pathway:	Antibody-drug Conjugate/ADC Related
Storage:	4°C, stored under nitrogen

* The compound is unstable in solutions, freshly prepared is recommended.



SOLVENT & SOLUBILITY

In Vitro	DMSO : 200 mg/mL (129.29 mM; Need ultrasonic)					
	Preparing Stock Solutions	Solvent Concentration	Mass	1 mg	5 mg	10 mg
		1 mM		0.6464 mL	3.2322 mL	6.4644 mL
		5 mM		0.1293 mL	0.6464 mL	1.2929 mL
		10 mM		0.0646 mL	0.3232 mL	0.6464 mL
Please refer to the solubility information to select the appropriate solvent.						
In Vivo	<ol style="list-style-type: none"> Add each solvent one by one: 10% DMSO >> 40% PEG300 >> 5% Tween-80 >> 45% saline Solubility: 5 mg/mL (3.23 mM); Clear solution; Need ultrasonic Add each solvent one by one: 10% DMSO >> 90% (20% SBE-β-CD in saline) Solubility: 5 mg/mL (3.23 mM); Suspended solution; Need ultrasonic Add each solvent one by one: 10% DMSO >> 90% corn oil Solubility: 5 mg/mL (3.23 mM); Suspended solution; Need ultrasonic 					

BIOLOGICAL ACTIVITY

Description	endo-BCN-PEG4-Val-Cit-PAB-MMAE is a cleavable 4 unit PEG ADC linker used in the synthesis of antibody-drug conjugates (ADCs) ^[1] . endo-BCN-PEG4-Val-Cit-PAB-MMAE is a click chemistry reagent, it contains a BCN group that can undergo strain-promoted alkyne-azide cycloaddition (SPAAC) with molecules containing Azide groups.
IC₅₀ & Target	Cleavable Linker
In Vitro	ADCs are comprised of an antibody to which is attached an ADC cytotoxin through an ADC linker ^[1] . MCE has not independently confirmed the accuracy of these methods. They are for reference only.

REFERENCES

[1]. Beck A, et al. Strategies and challenges for the next generation of antibody-drug conjugates. Nat Rev Drug Discov. 2017 May;16(5):315-337.

Caution: Product has not been fully validated for medical applications. For research use only.

Tel: 609-228-6898

Fax: 609-228-5909

E-mail: tech@MedChemExpress.com

Address: 1 Deer Park Dr, Suite Q, Monmouth Junction, NJ 08852, USA