



# SZABO SCANDIC

Part of Europa Biosite

## Produktinformation



Forschungsprodukte & Biochemikalien



Zellkultur & Verbrauchsmaterial



Diagnostik & molekulare Diagnostik



Laborgeräte & Service

Weitere Information auf den folgenden Seiten!  
See the following pages for more information!



### Lieferung & Zahlungsart

siehe unsere [Liefer- und Versandbedingungen](#)

### Zuschläge

- Mindermengenzuschlag
- Trockeneiszuschlag
- Gefahrgutzuschlag
- Expressversand

### SZABO-SCANDIC HandelsgmbH

Quellenstraße 110, A-1100 Wien

T. +43(0)1 489 3961-0

F. +43(0)1 489 3961-7

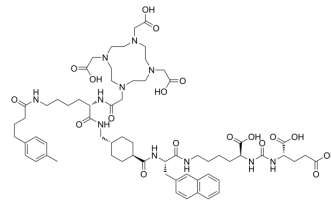
[mail@szabo-scandic.com](mailto:mail@szabo-scandic.com)

[www.szabo-scandic.com](http://www.szabo-scandic.com)

[linkedin.com/company/szaboscandic](https://www.linkedin.com/company/szaboscandic) 

## PSMA-ALB-56

<b>Cat. No.:</b>	HY-141536
<b>CAS No.:</b>	2306049-48-7
<b>Molecular Formula:</b>	C <sub>66</sub> H <sub>95</sub> N <sub>11</sub> O <sub>18</sub>
<b>Molecular Weight:</b>	1330.52
<b>Target:</b>	Drug-Linker Conjugates for ADC
<b>Pathway:</b>	Antibody-drug Conjugate/ADC Related
<b>Storage:</b>	-20°C, sealed storage, away from moisture * In solvent : -80°C, 6 months; -20°C, 1 month (sealed storage, away from moisture)



### BIOLOGICAL ACTIVITY

<b>Description</b>	PSMA-ALB-56 is a PSMA-targeting radioligand designed by combining the glutamate-urea PSMA-binding entity and an albumin binder <sup>[1]</sup> .
<b>IC<sub>50</sub> &amp; Target</b>	Traditional Cytotoxic Agents
<b>In Vivo</b>	PSMA-ALB-56 accumulates much faster in tumor tissues and is more efficiently cleared from the blood and background tissues, which results in excellent tumor-to-background contrast already 4 hours after injection. PSMA-ALB-56 increases median survival in mice <sup>[1]</sup> . MCE has not independently confirmed the accuracy of these methods. They are for reference only.

### REFERENCES

[1]. Umbricht CA, et al. Preclinical Development of Novel PSMA-Targeting Radioligands: Modulation of Albumin-Binding Properties To Improve Prostate Cancer Therapy. Mol Pharm. 2018;15(6):2297-2306.

**Caution: Product has not been fully validated for medical applications. For research use only.**

Tel: 609-228-6898

Fax: 609-228-5909

E-mail: tech@MedChemExpress.com

Address: 1 Deer Park Dr, Suite Q, Monmouth Junction, NJ 08852, USA