



# SZABO SCANDIC

Part of Europa Biosite

## Produktinformation



Forschungsprodukte & Biochemikalien



Zellkultur & Verbrauchsmaterial



Diagnostik & molekulare Diagnostik



Laborgeräte & Service

Weitere Information auf den folgenden Seiten!  
See the following pages for more information!



### Lieferung & Zahlungsart

siehe unsere [Liefer- und Versandbedingungen](#)

### Zuschläge

- Mindermengenzuschlag
- Trockeneiszuschlag
- Gefahrgutzuschlag
- Expressversand

### SZABO-SCANDIC HandelsgmbH

Quellenstraße 110, A-1100 Wien

T. +43(0)1 489 3961-0

F. +43(0)1 489 3961-7

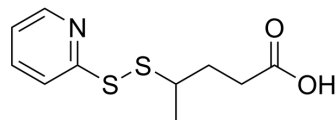
[mail@szabo-scandic.com](mailto:mail@szabo-scandic.com)

[www.szabo-scandic.com](http://www.szabo-scandic.com)

[linkedin.com/company/szaboscandic](https://www.linkedin.com/company/szaboscandic) 

## PPA

|                           |  |
|---------------------------|--|
| <b>Cat. No.:</b>          | HY-141664  |
| <b>CAS No.:</b>           | 452072-22-9  |
| <b>Molecular Formula:</b> | C <sub>10</sub> H <sub>13</sub> NO <sub>2</sub> S <sub>2</sub>   |
| <b>Molecular Weight:</b>  | 243.35   |
| <b>Target:</b>            | ADC Linker   |
| <b>Pathway:</b>           | Antibody-drug Conjugate/ADC Related  |
| <b>Storage:</b>           | 4°C, sealed storage, away from moisture and light<br>* In solvent : -80°C, 6 months; -20°C, 1 month (sealed storage, away from moisture and light) |



## SOLVENT & SOLUBILITY

### In Vitro

DMSO : 100 mg/mL (410.93 mM; Need ultrasonic)

| Concentration | Mass      |            |            |
|---------------|-----------|------------|------------|
|               | 1 mg      | 5 mg       | 10 mg      |
| 1 mM          | 4.1093 mL | 20.5465 mL | 41.0931 mL |
| 5 mM          | 0.8219 mL | 4.1093 mL  | 8.2186 mL  |
| 10 mM         | 0.4109 mL | 2.0547 mL  | 4.1093 mL  |

Please refer to the solubility information to select the appropriate solvent.

## BIOLOGICAL ACTIVITY

### Description

PPA is an ADC linker (US20060073528A1). PPA can be used for making antibody-drug conjugate<sup>[1]</sup>.

### IC<sub>50</sub> & Target

Disulfide Cleavable

## REFERENCES

[1]. Lecerf JM, et, al. Measurement methods. US20060073528A1.

**Caution: Product has not been fully validated for medical applications. For research use only.**

Tel: 609-228-6898

Fax: 609-228-5909

E-mail: tech@MedChemExpress.com

Address: 1 Deer Park Dr, Suite Q, Monmouth Junction, NJ 08852, USA