



# SZABO SCANDIC

Part of Europa Biosite

## Produktinformation



Forschungsprodukte & Biochemikalien



Zellkultur & Verbrauchsmaterial



Diagnostik & molekulare Diagnostik



Laborgeräte & Service

Weitere Information auf den folgenden Seiten!  
See the following pages for more information!



### Lieferung & Zahlungsart

siehe unsere [Liefer- und Versandbedingungen](#)

### Zuschläge

- Mindermengenzuschlag
- Trockeneiszuschlag
- Gefahrgutzuschlag
- Expressversand

### SZABO-SCANDIC HandelsgmbH

Quellenstraße 110, A-1100 Wien

T. +43(0)1 489 3961-0

F. +43(0)1 489 3961-7

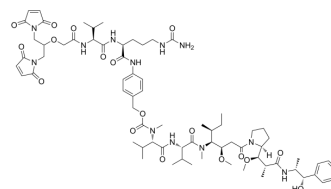
[mail@szabo-scandic.com](mailto:mail@szabo-scandic.com)

[www.szabo-scandic.com](http://www.szabo-scandic.com)

[linkedin.com/company/szaboscandic](https://www.linkedin.com/company/szaboscandic) 

## Bi-Mc-VC-PAB-MMAE

Cat. No.:	HY-141833
CAS No.:	1620837-70-8
Molecular Formula:	C <sub>71</sub> H <sub>104</sub> N <sub>12</sub> O <sub>18</sub>
Molecular Weight:	1413.66
Target:	Drug-Linker Conjugates for ADC
Pathway:	Antibody-drug Conjugate/ADC Related
Storage:	-20°C, protect from light, stored under nitrogen * The compound is unstable in solutions, freshly prepared is recommended.



### SOLVENT & SOLUBILITY

In Vitro	DMSO : 100 mg/mL (70.74 mM; Need ultrasonic)			
	Preparing Stock Solutions	Solvent Concentration	Mass	1 mg
				5 mg
				10 mg
				10 mg
Please refer to the solubility information to select the appropriate solvent.				
In Vivo	1. Add each solvent one by one: 10% DMSO >> 40% PEG300 >> 5% Tween-80 >> 45% saline Solubility: ≥ 2.5 mg/mL (1.77 mM); Clear solution			
	2. Add each solvent one by one: 10% DMSO >> 90% corn oil Solubility: ≥ 2.5 mg/mL (1.77 mM); Clear solution			

### BIOLOGICAL ACTIVITY

Description	Bi-Mc-VC-PAB-MMAE consists ADCs linker (Fmoc-Val-Cit-PAB) and potent tubulin inhibitor (MMAE). Bi-Mc-VC-PAB-MMAE is a agent-linker conjugate for ADC.
-------------	---

**Caution: Product has not been fully validated for medical applications. For research use only.**

Tel: 609-228-6898

Fax: 609-228-5909

E-mail: tech@MedChemExpress.com

Address: 1 Deer Park Dr, Suite Q, Monmouth Junction, NJ 08852, USA