



# SZABO SCANDIC

Part of Europa Biosite

## Produktinformation



Forschungsprodukte & Biochemikalien



Zellkultur & Verbrauchsmaterial



Diagnostik & molekulare Diagnostik



Laborgeräte & Service

Weitere Information auf den folgenden Seiten!  
See the following pages for more information!



### Lieferung & Zahlungsart

siehe unsere [Liefer- und Versandbedingungen](#)

### Zuschläge

- Mindermengenzuschlag
- Trockeneiszuschlag
- Gefahrgutzuschlag
- Expressversand

### SZABO-SCANDIC HandelsgmbH

Quellenstraße 110, A-1100 Wien

T. +43(0)1 489 3961-0

F. +43(0)1 489 3961-7

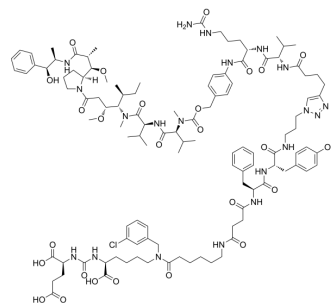
[mail@szabo-scandic.com](mailto:mail@szabo-scandic.com)

[www.szabo-scandic.com](http://www.szabo-scandic.com)

[linkedin.com/company/szaboscandic](https://www.linkedin.com/company/szaboscandic) 

## PSMA-Val-Cit-PAB-MMAE

<b>Cat. No.:</b>	HY-141860		
<b>CAS No.:</b>	2748039-79-2		
<b>Molecular Formula:</b>	C <sub>114</sub> H <sub>165</sub> ClN <sub>20</sub> O <sub>26</sub>		
<b>Molecular Weight:</b>	2267.1		
<b>Target:</b>	Drug-Linker Conjugates for ADC		
<b>Pathway:</b>	Antibody-drug Conjugate/ADC Related		
<b>Storage:</b>	Powder	-20°C	3 years
		4°C	2 years
	In solvent	-80°C	6 months
		-20°C	1 month



### SOLVENT & SOLUBILITY

#### In Vitro

DMSO : 100 mg/mL (44.11 mM; Need ultrasonic)

Concentration	Solvent	Mass		
		1 mg	5 mg	10 mg
Preparing Stock Solutions	1 mM	0.4411 mL	2.2055 mL	4.4109 mL
	5 mM	0.0882 mL	0.4411 mL	0.8822 mL
	10 mM	0.0441 mL	0.2205 mL	0.4411 mL

Please refer to the solubility information to select the appropriate solvent.

### BIOLOGICAL ACTIVITY

<b>Description</b>	PSMA-Val-Cit-PAB-MMAE is a novel small-molecule PSMA-targeted conjugate based on the monomethyl auristatin E for the chemotherapy of prostate cancer.
<b>IC<sub>50</sub> &amp; Target</b>	Auristatin

### REFERENCES

[1]. Machulkin AE, et al. Synthesis, Characterization, and Preclinical Evaluation of a Small-Molecule Prostate-Specific Membrane Antigen-Targeted Monomethyl Auristatin E Conjugate. *J Med Chem.* 2021 Nov 19.

---

**Caution: Product has not been fully validated for medical applications. For research use only.**

Tel: 609-228-6898

Fax: 609-228-5909

E-mail: [tech@MedChemExpress.com](mailto:tech@MedChemExpress.com)

Address: 1 Deer Park Dr, Suite Q, Monmouth Junction, NJ 08852, USA