



# SZABO SCANDIC

Part of Europa Biosite

## Produktinformation



Forschungsprodukte & Biochemikalien



Zellkultur & Verbrauchsmaterial



Diagnostik & molekulare Diagnostik



Laborgeräte & Service

Weitere Information auf den folgenden Seiten!  
See the following pages for more information!



### Lieferung & Zahlungsart

siehe unsere [Liefer- und Versandbedingungen](#)

### Zuschläge

- Mindermengenzuschlag
- Trockeneiszuschlag
- Gefahrgutzuschlag
- Expressversand

### SZABO-SCANDIC HandelsgmbH

Quellenstraße 110, A-1100 Wien

T. +43(0)1 489 3961-0

F. +43(0)1 489 3961-7

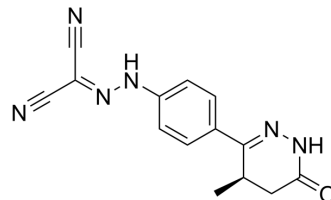
[mail@szabo-scandic.com](mailto:mail@szabo-scandic.com)

[www.szabo-scandic.com](http://www.szabo-scandic.com)

[linkedin.com/company/szaboscandic](https://www.linkedin.com/company/szaboscandic) 

## Levosimendan (Standard)

<b>Cat. No.:</b>	HY-14286R
<b>CAS No.:</b>	141505-33-1
<b>Molecular Formula:</b>	C <sub>14</sub> H <sub>12</sub> N <sub>6</sub> O
<b>Molecular Weight:</b>	280.28
<b>Target:</b>	Autophagy; Potassium Channel; Phosphodiesterase (PDE)
<b>Pathway:</b>	Autophagy; Membrane Transporter/Ion Channel; Metabolic Enzyme/Protease
<b>Storage:</b>	Please store the product under the recommended conditions in the Certificate of Analysis.



### BIOLOGICAL ACTIVITY

#### Description

Levosimendan (Standard) is the analytical standard of Levosimendan. This product is intended for research and analytical applications. Levosimendan (Simsndan; OR-1259) is a calcium sensitiser used in the management of acutely decompensated congestive heart failure.

### REFERENCES

- [1]. Nieminen, M.S., et al., Levosimendan: current data, clinical use and future development. *Heart Lung Vessel*, 2013. 5(4): p. 227-245.
- [2]. Papp, Z., et al., Levosimendan: molecular mechanisms and clinical implications: consensus of experts on the mechanisms of action of levosimendan. *Int J Cardiol*, 2012. 159(2): p. 82-7.
- [3]. Landoni, G., et al., Effects of levosimendan on mortality and hospitalization. A meta-analysis of randomized controlled studies. *Crit Care Med*, 2012. 40(2): p. 634-46.

**Caution: Product has not been fully validated for medical applications. For research use only.**

Tel: 609-228-6898

Fax: 609-228-5909

E-mail: [tech@MedChemExpress.com](mailto:tech@MedChemExpress.com)

Address: 1 Deer Park Dr, Suite Q, Monmouth Junction, NJ 08852, USA