



# SZABO SCANDIC

Part of Europa Biosite

## Produktinformation



Forschungsprodukte & Biochemikalien



Zellkultur & Verbrauchsmaterial



Diagnostik & molekulare Diagnostik



Laborgeräte & Service

Weitere Information auf den folgenden Seiten!  
See the following pages for more information!



### Lieferung & Zahlungsart

siehe unsere [Liefer- und Versandbedingungen](#)

### Zuschläge

- Mindermengenzuschlag
- Trockeneiszuschlag
- Gefahrgutzuschlag
- Expressversand

### SZABO-SCANDIC HandelsgmbH

Quellenstraße 110, A-1100 Wien

T. +43(0)1 489 3961-0

F. +43(0)1 489 3961-7

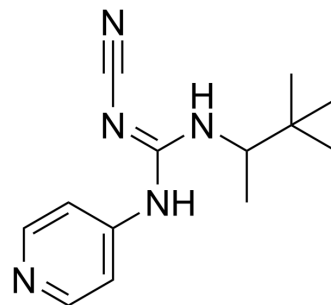
[mail@szabo-scandic.com](mailto:mail@szabo-scandic.com)

[www.szabo-scandic.com](http://www.szabo-scandic.com)

[linkedin.com/company/szaboscandic](https://www.linkedin.com/company/szaboscandic) 

## Pinacidil (Standard)

<b>Cat. No.:</b>	HY-14290R
<b>CAS No.:</b>	60560-33-0
<b>Molecular Formula:</b>	C <sub>13</sub> H <sub>19</sub> N <sub>5</sub>
<b>Molecular Weight:</b>	245.32
<b>Target:</b>	Potassium Channel
<b>Pathway:</b>	Membrane Transporter/Ion Channel
<b>Storage:</b>	Please store the product under the recommended conditions in the Certificate of Analysis.



### BIOLOGICAL ACTIVITY

<b>Description</b>	Pinacidil (Standard) is the analytical standard of Pinacidil. This product is intended for research and analytical applications. Pinacidil is a potent activator of potassium channel. Pinacidil is an antihypertensive agent which hyperpolarises vascular smooth muscle by opening K <sup>+</sup> -channels. Pinacidil significantly improves the reperfusion function and cardiac compliance. Pinacidil has direct cardioprotective efficacy <sup>[1]</sup> .
<b>IC<sub>50</sub> &amp; Target</b>	potassium channel <sup>[1]</sup>

### REFERENCES

- [1]. Grover GJ, et al. Anti-ischemic effects of the potassium channel activators pinacidil and cromakalim and the reversal of these effects with the potassium channel blocker glyburide. *J Pharmacol Exp Ther.* 1989;251(1):98-104.
- [2]. Hamilton TC, et al. Cromakalim, nicorandil and pinacidil: novel drugs which open potassium channels in smooth muscle. *Gen Pharmacol.* 1989;20(1):1-9.

**Caution: Product has not been fully validated for medical applications. For research use only.**

Tel: 609-228-6898

Fax: 609-228-5909

E-mail: tech@MedChemExpress.com

Address: 1 Deer Park Dr, Suite Q, Monmouth Junction, NJ 08852, USA