



SZABO SCANDIC

Part of Europa Biosite

Produktinformation



Forschungsprodukte & Biochemikalien



Zellkultur & Verbrauchsmaterial



Diagnostik & molekulare Diagnostik



Laborgeräte & Service

Weitere Information auf den folgenden Seiten!
See the following pages for more information!



Lieferung & Zahlungsart

siehe unsere [Liefer- und Versandbedingungen](#)

Zuschläge

- Mindermengenzuschlag
- Trockeneiszuschlag
- Gefahrgutzuschlag
- Expressversand

SZABO-SCANDIC HandelsgmbH

Quellenstraße 110, A-1100 Wien

T. +43(0)1 489 3961-0

F. +43(0)1 489 3961-7

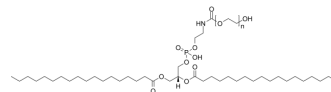
mail@szabo-scandic.com

www.szabo-scandic.com

[linkedin.com/company/szaboscandic](https://www.linkedin.com/company/szaboscandic)

DSPE-PEG 2000

Cat. No.:	HY-142979
CAS No.:	892144-24-0
Molecular Formula:	$(C_2H_4O)_n C_{42}H_{82}NO_{10}P$
Target:	Liposome
Pathway:	Metabolic Enzyme/Protease
Storage:	Powder -20°C 3 years In solvent -80°C 6 months -20°C 1 month



SOLVENT & SOLUBILITY

In Vitro	DMSO : 71.43 mg/mL (Need ultrasonic) Ethanol : 25 mg/mL (ultrasonic and warming and heat to 60°C) H ₂ O : 25 mg/mL (ultrasonic and warming and heat to 60°C)
In Vivo	1. Add each solvent one by one: 10% DMSO >> 40% PEG300 >> 5% Tween-80 >> 45% saline Solubility: ≥ 2.5 mg/mL (Infinity mM); Clear solution 2. Add each solvent one by one: 10% DMSO >> 90% (20% SBE-β-CD in saline) Solubility: ≥ 2.5 mg/mL (Infinity mM); Clear solution

BIOLOGICAL ACTIVITY

Description	DSPE-PEG 2000 is a PEG-lipid that can be used to form micelles as nanoparticles for drug delivery ^[1] .
-------------	--

CUSTOMER VALIDATION

- Cancer Nanotechnol. 2023 Nov 13.
- Polym Test. 2023 Dec 1, 108292.
- SSRN. 2023 Jun 27.

See more customer validations on www.MedChemExpress.com

REFERENCES

[1]. Kastantin M, et al. Effect of the lipid chain melting transition on the stability of DSPE-PEG(2000) micelles. Langmuir. 2009 Jul 7;25(13):7279-86.

Caution: Product has not been fully validated for medical applications. For research use only.

Tel: 609-228-6898

Fax: 609-228-5909

E-mail: tech@MedChemExpress.com

Address: 1 Deer Park Dr, Suite Q, Monmouth Junction, NJ 08852, USA