



SZABO SCANDIC

Part of Europa Biosite

Produktinformation



Forschungsprodukte & Biochemikalien



Zellkultur & Verbrauchsmaterial



Diagnostik & molekulare Diagnostik



Laborgeräte & Service

Weitere Information auf den folgenden Seiten!
See the following pages for more information!



Lieferung & Zahlungsart

siehe unsere [Liefer- und Versandbedingungen](#)

Zuschläge

- Mindermengenzuschlag
- Trockeneiszuschlag
- Gefahrgutzuschlag
- Expressversand

SZABO-SCANDIC HandelsgmbH

Quellenstraße 110, A-1100 Wien

T. +43(0)1 489 3961-0

F. +43(0)1 489 3961-7

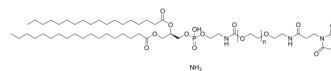
mail@szabo-scandic.com

www.szabo-scandic.com

[linkedin.com/company/szaboscandic](https://www.linkedin.com/company/szaboscandic) 

DSPE-PEG2000-Mal ammonium

Cat. No.:	HY-144004
CAS No.:	474922-22-0
Molecular Formula:	$(C_2H_4O)_n C_{51}H_{92}N_1O_{13}P.H_3N$
Target:	Liposome
Pathway:	Metabolic Enzyme/Protease
Storage:	-20°C, sealed storage, away from moisture * In solvent : -80°C, 6 months; -20°C, 1 month (sealed storage, away from moisture)



SOLVENT & SOLUBILITY

In Vitro	DMF : 50 mg/mL (Need ultrasonic)
----------	----------------------------------

BIOLOGICAL ACTIVITY

Description	DSPE-PEG-Maleimide has DSPE phospholipid and maleimide to prepare nanostructured lipid carrier. DSPE-PEG-Maleimide extends blood circulation time and higher stability for encapsulated agents ^{[1][2]} .
-------------	--

CUSTOMER VALIDATION

- Compos Part B-Eng. 2023 Oct 15, 111047.

See more customer validations on www.MedChemExpress.com

REFERENCES

[1]. Schnorenberg MR, et, al. Synthesis and Purification of Homogeneous Lipid-Based Peptide Nanocarriers by Overcoming Phospholipid Ester Hydrolysis. ACS Omega. 2018 Oct 31;3(10):14144-14150.

[2]. Huwyler J, et, al. Brain drug delivery of small molecules using immunoliposomes. Proc Natl Acad Sci U S A. 1996 Nov 26;93(24):14164-9.

Caution: Product has not been fully validated for medical applications. For research use only.

Tel: 609-228-6898

Fax: 609-228-5909

E-mail: tech@MedChemExpress.com

Address: 1 Deer Park Dr, Suite Q, Monmouth Junction, NJ 08852, USA