



SZABO SCANDIC

Part of Europa Biosite

Produktinformation



Forschungsprodukte & Biochemikalien



Zellkultur & Verbrauchsmaterial



Diagnostik & molekulare Diagnostik



Laborgeräte & Service

Weitere Information auf den folgenden Seiten!
See the following pages for more information!



Lieferung & Zahlungsart

siehe unsere [Liefer- und Versandbedingungen](#)

Zuschläge

- Mindermengenzuschlag
- Trockeneiszuschlag
- Gefahrgutzuschlag
- Expressversand

SZABO-SCANDIC HandelsgmbH

Quellenstraße 110, A-1100 Wien

T. +43(0)1 489 3961-0

F. +43(0)1 489 3961-7

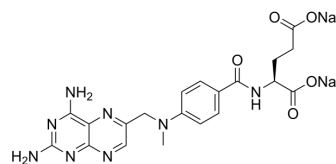
mail@szabo-scandic.com

www.szabo-scandic.com

[linkedin.com/company/szaboscandic](https://www.linkedin.com/company/szaboscandic) 

Methotrexate disodium

Cat. No.:	HY-14519A
CAS No.:	7413-34-5
Molecular Formula:	C ₂₀ H ₂₀ N ₈ Na ₂ O ₅
Molecular Weight:	498.4
Target:	Antifolate; DNA/RNA Synthesis; ADC Cytotoxin; Apoptosis; Bacterial
Pathway:	Cell Cycle/DNA Damage; Antibody-drug Conjugate/ADC Related; Apoptosis; Anti-infection
Storage:	4°C, sealed storage, away from moisture and light * In solvent : -80°C, 6 months; -20°C, 1 month (sealed storage, away from moisture and light)



SOLVENT & SOLUBILITY

In Vitro

H₂O : 50 mg/mL (100.32 mM; Need ultrasonic)

DMSO : 5 mg/mL (10.03 mM; ultrasonic and warming and adjust pH to 5 with HCl and heat to 60°C)

	Solvent Concentration	Mass		
		1 mg	5 mg	10 mg
Preparing Stock Solutions	1 mM	2.0064 mL	10.0321 mL	20.0642 mL
	5 mM	0.4013 mL	2.0064 mL	4.0128 mL
	10 mM	0.2006 mL	1.0032 mL	2.0064 mL

Please refer to the solubility information to select the appropriate solvent.

BIOLOGICAL ACTIVITY

Description

Methotrexate (Amethopterin) disodium, an antimetabolite and antifolate agent, inhibits the enzyme dihydrofolate reductase, thereby preventing the conversion of folic acid into tetrahydrofolate, and inhibiting DNA synthesis. Methotrexate disodium, also an immunosuppressant and antineoplastic agent, is used for the research of rheumatoid arthritis and a number of different cancers (such as acute lymphoblastic leukemia)^{[1][2][3]}.

IC₅₀ & Target

Traditional Cytotoxic Agents

In Vivo

Methotrexate (Amethopterin) disodium reduces thymus and spleen indices of mice. Methotrexate disodium markedly decreases white blood cells, thymic and splenic lymphocytes at dose ≥5 mg/kg. However, there is a significant difference between the treatment plus control group and the model group (p<0.01). The combination of grape seed proanthocyanidins and Siberian ginseng eleutherosides obviously diminishes the effects of Methotrexate exposure on indices of thymus and spleens in mice^[2].

Methotrexate (MTX) disodium (2 mg/kg; i.p.; once in a week for 5 weeks) is effective in Freund's complete adjuvant-induced arthritis. The combination of Methotrexate disodium (1 mg/kg; i.p.; once in a week for 5 weeks) and Curcumin (30 mg/kg and

100 mg/kg, thrice a week for 5 weeks; i.p.) shows a significant anti-arthritic action and protection from hematological toxicity^[4].

MCE has not independently confirmed the accuracy of these methods. They are for reference only.

CUSTOMER VALIDATION

- J Clin Invest. 2023 May 30;e169993.
- Small. 2022 Jul;18(30):e2202337.
- EMBO Mol Med. 2022 Feb 17;e14552.
- Cell Death Dis. 2020 Nov 12;11(11):976.
- J Pharm Anal. 7 August 2022.

See more customer validations on www.MedChemExpress.com

REFERENCES

- [1]. Tian H, et al. Understanding the mechanisms of action of methotrexate: implications for the treatment of rheumatoid arthritis. Bull NYU Hosp Jt Dis. 2007;65(3):168-73.
- [2]. Swierkot J, et al. Methotrexate in rheumatoid arthritis. Pharmacol Rep. 2006 Jul-Aug;58(4):473-92.
- [3]. Swierkot J, et al. Methotrexate in rheumatoid arthritis. Pharmacol Rep. 2006 Jul-Aug;58(4):473-92.
- [4]. Banji D, et al. Evaluation of the concomitant use of methotrexate and curcumin on Freund's complete adjuvant-induced arthritis and hematological indices in rats. Indian J Pharmacol. 2011;43(5):546-550.
-

Caution: Product has not been fully validated for medical applications. For research use only.

Tel: 609-228-6898

Fax: 609-228-5909

E-mail: tech@MedChemExpress.com

Address: 1 Deer Park Dr, Suite Q, Monmouth Junction, NJ 08852, USA