



SZABO SCANDIC

Part of Europa Biosite

Produktinformation



Forschungsprodukte & Biochemikalien



Zellkultur & Verbrauchsmaterial



Diagnostik & molekulare Diagnostik



Laborgeräte & Service

Weitere Information auf den folgenden Seiten!
See the following pages for more information!



Lieferung & Zahlungsart

siehe unsere [Liefer- und Versandbedingungen](#)

Zuschläge

- Mindermengenzuschlag
- Trockeneiszuschlag
- Gefahrgutzuschlag
- Expressversand

SZABO-SCANDIC HandelsgmbH

Quellenstraße 110, A-1100 Wien

T. +43(0)1 489 3961-0

F. +43(0)1 489 3961-7

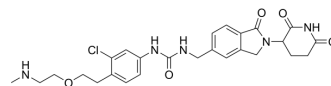
mail@szabo-scandic.com

www.szabo-scandic.com

[linkedin.com/company/szaboscandic](https://www.linkedin.com/company/szaboscandic) 

CC-885-CH2-PEG1-NH-CH3

Cat. No.:	HY-145449
CAS No.:	2722698-03-3
Molecular Formula:	C ₂₆ H ₃₀ ClN ₅ O ₅
Molecular Weight:	528
Target:	ADC Cytotoxin; E3 Ligase Ligand-Linker Conjugates
Pathway:	Antibody-drug Conjugate/ADC Related; PROTAC
Storage:	4°C, sealed storage, away from moisture * In solvent : -80°C, 6 months; -20°C, 1 month (sealed storage, away from moisture)



SOLVENT & SOLUBILITY

In Vitro	DMSO : 100 mg/mL (189.39 mM; Need ultrasonic)					
	Preparing Stock Solutions	Solvent	Mass	1 mg	5 mg	10 mg
		Concentration				
		1 mM		1.8939 mL	9.4697 mL	18.9394 mL
		5 mM		0.3788 mL	1.8939 mL	3.7879 mL
10 mM		0.1894 mL	0.9470 mL	1.8939 mL		
Please refer to the solubility information to select the appropriate solvent.						
In Vivo	1. Add each solvent one by one: 10% DMSO >> 40% PEG300 >> 5% Tween-80 >> 45% saline Solubility: ≥ 2.5 mg/mL (4.73 mM); Clear solution 2. Add each solvent one by one: 10% DMSO >> 90% corn oil Solubility: ≥ 2.5 mg/mL (4.73 mM); Clear solution					

BIOLOGICAL ACTIVITY

Description	CC-885-CH2-PEG1-NH-CH3 is a neoDegradator that can be used in the synthesis of Antibody neoDegradator Conjugate (AnDC) ^[1] [2].
--------------------	---

REFERENCES

[1]. FISHKIN N, et, al. Neodegradator conjugates. WO2021198965A1.

Caution: Product has not been fully validated for medical applications. For research use only.

Tel: 609-228-6898

Fax: 609-228-5909

E-mail: tech@MedChemExpress.com

Address: 1 Deer Park Dr, Suite Q, Monmouth Junction, NJ 08852, USA