



# SZABO SCANDIC

Part of Europa Biosite

## Produktinformation



Forschungsprodukte & Biochemikalien



Zellkultur & Verbrauchsmaterial



Diagnostik & molekulare Diagnostik



Laborgeräte & Service

Weitere Information auf den folgenden Seiten!  
See the following pages for more information!



### Lieferung & Zahlungsart

siehe unsere [Liefer- und Versandbedingungen](#)

### Zuschläge

- Mindermengenzuschlag
- Trockeneiszuschlag
- Gefahrgutzuschlag
- Expressversand

### SZABO-SCANDIC HandelsgmbH

Quellenstraße 110, A-1100 Wien

T. +43(0)1 489 3961-0

F. +43(0)1 489 3961-7

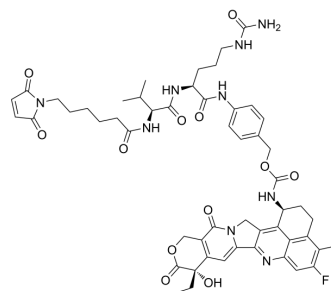
[mail@szabo-scandic.com](mailto:mail@szabo-scandic.com)

[www.szabo-scandic.com](http://www.szabo-scandic.com)

[linkedin.com/company/szaboscandic](https://www.linkedin.com/company/szaboscandic) 

## MC-Val-Cit-PAB-Exatecan

<b>Cat. No.:</b>	HY-145929
<b>CAS No.:</b>	2504068-28-2
<b>Molecular Formula:</b>	C <sub>53</sub> H <sub>60</sub> FN <sub>9</sub> O <sub>12</sub>
<b>Molecular Weight:</b>	1034.1
<b>Target:</b>	Drug-Linker Conjugates for ADC
<b>Pathway:</b>	Antibody-drug Conjugate/ADC Related
<b>Storage:</b>	4°C, sealed storage, away from moisture * In solvent : -80°C, 6 months; -20°C, 1 month (sealed storage, away from moisture)



### SOLVENT & SOLUBILITY

<b>In Vitro</b>	DMSO : 50 mg/mL (48.35 mM; Need ultrasonic)																							
	<table border="1"> <thead> <tr> <th rowspan="2">Solvent Concentration</th> <th colspan="3">Mass</th> </tr> <tr> <th>1 mg</th> <th>5 mg</th> <th>10 mg</th> </tr> </thead> <tbody> <tr> <td><b>Preparing Stock Solutions</b></td> <td></td> <td></td> <td></td> </tr> <tr> <td>1 mM</td> <td>0.9670 mL</td> <td>4.8351 mL</td> <td>9.6702 mL</td> </tr> <tr> <td>5 mM</td> <td>0.1934 mL</td> <td>0.9670 mL</td> <td>1.9340 mL</td> </tr> <tr> <td>10 mM</td> <td>0.0967 mL</td> <td>0.4835 mL</td> <td>0.9670 mL</td> </tr> </tbody> </table>	Solvent Concentration	Mass			1 mg	5 mg	10 mg	<b>Preparing Stock Solutions</b>				1 mM	0.9670 mL	4.8351 mL	9.6702 mL	5 mM	0.1934 mL	0.9670 mL	1.9340 mL	10 mM	0.0967 mL	0.4835 mL	0.9670 mL
Solvent Concentration	Mass																							
	1 mg	5 mg	10 mg																					
<b>Preparing Stock Solutions</b>																								
1 mM	0.9670 mL	4.8351 mL	9.6702 mL																					
5 mM	0.1934 mL	0.9670 mL	1.9340 mL																					
10 mM	0.0967 mL	0.4835 mL	0.9670 mL																					
	Please refer to the solubility information to select the appropriate solvent.																							
<b>In Vivo</b>	<ol style="list-style-type: none"> <li>Add each solvent one by one: 10% DMSO &gt;&gt; 40% PEG300 &gt;&gt; 5% Tween-80 &gt;&gt; 45% saline Solubility: ≥ 1.25 mg/mL (1.21 mM); Clear solution</li> <li>Add each solvent one by one: 10% DMSO &gt;&gt; 90% corn oil Solubility: 1.25 mg/mL (1.21 mM); Suspended solution; Need ultrasonic</li> </ol>																							

### BIOLOGICAL ACTIVITY

<b>Description</b>	MC-Val-Cit-PAB-Exatecan (MC-Val-Cit-PAB-DX8951) is a agent-linker conjugate for ADC. MC-Val-Cit-PAB-Exatecan is composed of a DNA topoisomerase I DX-8951 (HY-13631) and a cathepsin cleavable ADC linker.
<b>IC<sub>50</sub> &amp; Target</b>	Camptothecins
<b>In Vitro</b>	ADCs are comprised of an antibody to which is attached an ADC cytotoxin through an ADC linker <sup>[1]</sup> . MCE has not independently confirmed the accuracy of these methods. They are for reference only.

### REFERENCES

**Caution: Product has not been fully validated for medical applications. For research use only.**

Tel: 609-228-6898

Fax: 609-228-5909

E-mail: [tech@MedChemExpress.com](mailto:tech@MedChemExpress.com)

Address: 1 Deer Park Dr, Suite Q, Monmouth Junction, NJ 08852, USA