



SZABO SCANDIC

Part of Europa Biosite

Produktinformation



Forschungsprodukte & Biochemikalien



Zellkultur & Verbrauchsmaterial



Diagnostik & molekulare Diagnostik



Laborgeräte & Service

Weitere Information auf den folgenden Seiten!
See the following pages for more information!



Lieferung & Zahlungsart

siehe unsere [Liefer- und Versandbedingungen](#)

Zuschläge

- Mindermengenzuschlag
- Trockeneiszuschlag
- Gefahrgutzuschlag
- Expressversand

SZABO-SCANDIC HandelsgmbH

Quellenstraße 110, A-1100 Wien

T. +43(0)1 489 3961-0

F. +43(0)1 489 3961-7

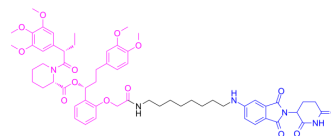
mail@szabo-scandic.com

www.szabo-scandic.com

[linkedin.com/company/szaboscandic](https://www.linkedin.com/company/szaboscandic) 

dTAG-47

Cat. No.:	HY-147098
CAS No.:	2265886-81-3
Molecular Formula:	C ₅₉ H ₇₃ N ₅ O ₁₄
Molecular Weight:	1076.24
Target:	PROTACs; FKBP
Pathway:	PROTAC; Apoptosis; Autophagy; Immunology/Inflammation
Storage:	-20°C, sealed storage, away from moisture and light * In solvent : -80°C, 6 months; -20°C, 1 month (sealed storage, away from moisture and light)



SOLVENT & SOLUBILITY

In Vitro

DMSO : 100 mg/mL (92.92 mM; Need ultrasonic)

Concentration	Mass		
	1 mg	5 mg	10 mg
1 mM	0.9292 mL	4.6458 mL	9.2916 mL
5 mM	0.1858 mL	0.9292 mL	1.8583 mL
10 mM	0.0929 mL	0.4646 mL	0.9292 mL

Please refer to the solubility information to select the appropriate solvent.

BIOLOGICAL ACTIVITY

Description

dTAG-47, heterobifunctional dTAG molecule, targets mutant FKBP12 (FKBP12^{F36V}). FKBP12^{F36V} serves as a degradation tag (dTAG) and is fused to a protein of interest. dTAG-47 can be used for the research of basal-like breast cancers (BBC)^[1].

REFERENCES

[1]. Hai-Tsang Huang, et al. MELK is not necessary for the proliferation of basal-like breast cancer cells. *Elife*. 2017 Sep 19;6:e26693.

Caution: Product has not been fully validated for medical applications. For research use only.

Tel: 609-228-6898

Fax: 609-228-5909

E-mail: tech@MedChemExpress.com

Address: 1 Deer Park Dr, Suite Q, Monmouth Junction, NJ 08852, USA