



# SZABO SCANDIC

Part of Europa Biosite

## Produktinformation



Forschungsprodukte & Biochemikalien



Zellkultur & Verbrauchsmaterial



Diagnostik & molekulare Diagnostik



Laborgeräte & Service

Weitere Information auf den folgenden Seiten!  
See the following pages for more information!



### Lieferung & Zahlungsart

siehe unsere [Liefer- und Versandbedingungen](#)

### Zuschläge

- Mindermengenzuschlag
- Trockeneiszuschlag
- Gefahrgutzuschlag
- Expressversand

### SZABO-SCANDIC HandelsgmbH

Quellenstraße 110, A-1100 Wien

T. +43(0)1 489 3961-0

F. +43(0)1 489 3961-7

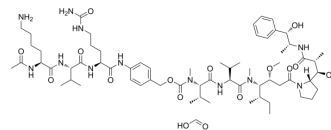
[mail@szabo-scandic.com](mailto:mail@szabo-scandic.com)

[www.szabo-scandic.com](http://www.szabo-scandic.com)

[linkedin.com/company/szaboscandic](https://www.linkedin.com/company/szaboscandic) 

## Ac-Lys-Val-Cit-PABC-MMAE formic

<b>Cat. No.:</b>	HY-147286A
<b>Molecular Formula:</b>	C <sub>67</sub> H <sub>110</sub> N <sub>12</sub> O <sub>16</sub>
<b>Molecular Weight:</b>	1339.66
<b>Target:</b>	Drug-Linker Conjugates for ADC
<b>Pathway:</b>	Antibody-drug Conjugate/ADC Related
<b>Storage:</b>	-20°C, sealed storage, away from moisture and light * In solvent : -80°C, 6 months; -20°C, 1 month (sealed storage, away from moisture and light)



### SOLVENT & SOLUBILITY

#### In Vitro

DMSO : 200 mg/mL (149.29 mM; Need ultrasonic and warming)

Preparing Stock Solutions	Solvent Concentration	Mass		
		1 mg	5 mg	10 mg
	1 mM	0.7465 mL	3.7323 mL	7.4646 mL
	5 mM	0.1493 mL	0.7465 mL	1.4929 mL
	10 mM	0.0746 mL	0.3732 mL	0.7465 mL

Please refer to the solubility information to select the appropriate solvent.

### BIOLOGICAL ACTIVITY

#### Description

Ac-Lys-Val-Cit-PABC-MMAE (formic) is a agent-linker conjugate for ADC. Ac-Lys-Val-Cit-PABC-MMAE contains the ADC linker (peptide Ac-Lys-Val-Cit-PABC) and a potent tubulin polymerization inhibitor [Monomethyl auristatin E](#) (HY-15162)<sup>[1]</sup>.

### REFERENCES

[1]. Kleniman, et al. Engineered polypeptide conjugates. WO2015015448A2.

**Caution: Product has not been fully validated for medical applications. For research use only.**

Tel: 609-228-6898

Fax: 609-228-5909

E-mail: tech@MedChemExpress.com

Address: 1 Deer Park Dr, Suite Q, Monmouth Junction, NJ 08852, USA