



SZABO SCANDIC

Part of Europa Biosite

Produktinformation



Forschungsprodukte & Biochemikalien



Zellkultur & Verbrauchsmaterial



Diagnostik & molekulare Diagnostik



Laborgeräte & Service

Weitere Information auf den folgenden Seiten!
See the following pages for more information!



Lieferung & Zahlungsart

siehe unsere [Liefer- und Versandbedingungen](#)

Zuschläge

- Mindermengenzuschlag
- Trockeneiszuschlag
- Gefahrgutzuschlag
- Expressversand

SZABO-SCANDIC HandelsgmbH

Quellenstraße 110, A-1100 Wien

T. +43(0)1 489 3961-0

F. +43(0)1 489 3961-7

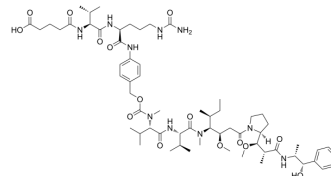
mail@szabo-scandic.com

www.szabo-scandic.com

[linkedin.com/company/szaboscandic](https://www.linkedin.com/company/szaboscandic)

OH-Glu-Val-Cit-PAB-MMAE

| | |
|---------------------------|--|
| Cat. No.: | HY-148245 |
| CAS No.: | 1895916-23-0 |
| Molecular Formula: | C ₆₃ H ₁₀₀ N ₁₀ O ₁₅ |
| Molecular Weight: | 1237.53 |
| Target: | Drug-Linker Conjugates for ADC |
| Pathway: | Antibody-drug Conjugate/ADC Related |
| Storage: | -20°C, sealed storage, away from moisture and light * In solvent : -80°C, 6 months; -20°C, 1 month (sealed storage, away from moisture and light) |



SOLVENT & SOLUBILITY

In Vitro

DMSO : 180 mg/mL (145.45 mM; Need ultrasonic)

| Concentration | Mass | | | |
|---------------|-----------|-----------|-----------|--|
| | 1 mg | 5 mg | 10 mg | |
| 1 mM | 0.8081 mL | 4.0403 mL | 8.0806 mL | |
| 5 mM | 0.1616 mL | 0.8081 mL | 1.6161 mL | |
| 10 mM | 0.0808 mL | 0.4040 mL | 0.8081 mL | |

Please refer to the solubility information to select the appropriate solvent.

BIOLOGICAL ACTIVITY

Description

OH-Glu-Val-Cit-PAB-MMAE consists a cleavable ADC linker (OH-Glu-Val-Cit-PAB) and a potent tubulin inhibitor (MMAE). SuO-Glu-Val-Cit-PAB-MMAE can be used in the synthesis of antibody-drug conjugates (ADCs)^[1].

REFERENCES

[1]. Gemma E Mudd, et al. Discovery of BT8009: A Nectin-4 Targeting Bicycle Toxin Conjugate for the Treatment of Cancer. J Med Chem. 2022 Nov 10;65(21):14337-14347.

Caution: Product has not been fully validated for medical applications. For research use only.

Tel: 609-228-6898

Fax: 609-228-5909

E-mail: tech@MedChemExpress.com

Address: 1 Deer Park Dr, Suite Q, Monmouth Junction, NJ 08852, USA