



SZABO SCANDIC

Part of Europa Biosite

Produktinformation



Forschungsprodukte & Biochemikalien



Zellkultur & Verbrauchsmaterial



Diagnostik & molekulare Diagnostik



Laborgeräte & Service

Weitere Information auf den folgenden Seiten!
See the following pages for more information!



Lieferung & Zahlungsart

siehe unsere [Liefer- und Versandbedingungen](#)

Zuschläge

- Mindermengenzuschlag
- Trockeneiszuschlag
- Gefahrgutzuschlag
- Expressversand

SZABO-SCANDIC HandelsgmbH

Quellenstraße 110, A-1100 Wien

T. +43(0)1 489 3961-0

F. +43(0)1 489 3961-7

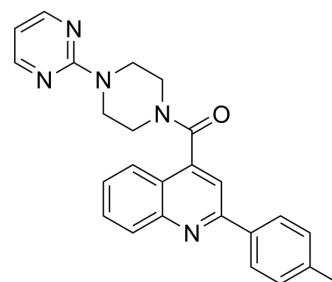
mail@szabo-scandic.com

www.szabo-scandic.com

[linkedin.com/company/szaboscandic](https://www.linkedin.com/company/szaboscandic) 

lucPpy-IN-1

Cat. No.:	HY-148407		
CAS No.:	546100-66-7		
Molecular Formula:	C ₂₅ H ₂₃ N ₅ O		
Molecular Weight:	409.48		
Target:	Fluorescent Dye		
Pathway:	Others		
Storage:	Powder	-20°C	3 years
		4°C	2 years
	In solvent	-80°C	6 months
		-20°C	1 month



SOLVENT & SOLUBILITY

In Vitro

DMSO : 125 mg/mL (305.27 mM; ultrasonic and warming and heat to 60°C)

Concentration	Solvent	Mass		
		1 mg	5 mg	10 mg
Preparing Stock Solutions	1 mM	2.4421 mL	12.2106 mL	24.4212 mL
	5 mM	0.4884 mL	2.4421 mL	4.8842 mL
	10 mM	0.2442 mL	1.2211 mL	2.4421 mL

Please refer to the solubility information to select the appropriate solvent.

BIOLOGICAL ACTIVITY

Description	lucPpy-IN-1 (compound 9) is an ATP-dependent luciferase from Photinus pyralis (lucPpy) inhibitor with an IC ₅₀ value of 4.0 μM. lucPpy-IN-1 can be used for the research of target's agentgability ^[1] .
IC₅₀ & Target	IC ₅₀ : 4.0 μM (lucPpy) ^[1]
In Vitro	lucPpy-IN-1 (0.1 nM-100 μM) inhibits activity of lucPpy with an IC ₅₀ value of 4.0 μM ^[1] . MCE has not independently confirmed the accuracy of these methods. They are for reference only.

REFERENCES

[1]. Auld DS, et al. A basis for reduced chemical library inhibition of firefly luciferase obtained from directed evolution. J Med Chem. 2009 Mar 12;52(5):1450-8.

Caution: Product has not been fully validated for medical applications. For research use only.

Tel: 609-228-6898

Fax: 609-228-5909

E-mail: tech@MedChemExpress.com

Address: 1 Deer Park Dr, Suite Q, Monmouth Junction, NJ 08852, USA