



SZABO SCANDIC

Part of Europa Biosite

Produktinformation



Forschungsprodukte & Biochemikalien



Zellkultur & Verbrauchsmaterial



Diagnostik & molekulare Diagnostik



Laborgeräte & Service

Weitere Information auf den folgenden Seiten!
See the following pages for more information!



Lieferung & Zahlungsart

siehe unsere [Liefer- und Versandbedingungen](#)

Zuschläge

- Mindermengenzuschlag
- Trockeneiszuschlag
- Gefahrgutzuschlag
- Expressversand

SZABO-SCANDIC HandelsgmbH

Quellenstraße 110, A-1100 Wien

T. +43(0)1 489 3961-0

F. +43(0)1 489 3961-7

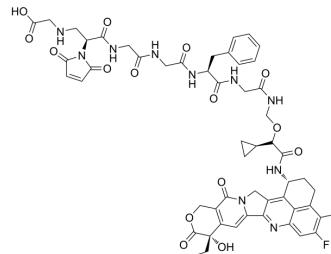
mail@szabo-scandic.com

www.szabo-scandic.com

[linkedin.com/company/szaboscandic](https://www.linkedin.com/company/szaboscandic) 

Gly-Mal-Gly-Gly-Phe-Gly-amide-methylcyclopropane-Exatecan

Cat. No.:	HY-148812
CAS No.:	2766786-76-7
Molecular Formula:	C ₅₄ H ₅₇ N ₁₀ O ₁₅
Molecular Weight:	1105.09
Target:	Drug-Linker Conjugates for ADC
Pathway:	Antibody-drug Conjugate/ADC Related
Storage:	Please store the product under the recommended conditions in the Certificate of Analysis.



BIOLOGICAL ACTIVITY

Description

Gly-Mal-Gly-Gly-Phe-Gly-amide-methylcyclopropane-Exatecan is used for ADC Synthesis^[1].

REFERENCES

[1]. Zhu Yi, et al. Camptothecin derivative and ligand-drug conjugate thereof. World Intellectual Property Organization, WO2022078260 A1. 2022-04-21.

Caution: Product has not been fully validated for medical applications. For research use only.

Tel: 609-228-6898

Fax: 609-228-5909

E-mail: tech@MedChemExpress.com

Address: 1 Deer Park Dr, Suite Q, Monmouth Junction, NJ 08852, USA