



SZABO SCANDIC

Part of Europa Biosite

Produktinformation



Forschungsprodukte & Biochemikalien



Zellkultur & Verbrauchsmaterial



Diagnostik & molekulare Diagnostik



Laborgeräte & Service

Weitere Information auf den folgenden Seiten!
See the following pages for more information!



Lieferung & Zahlungsart

siehe unsere [Liefer- und Versandbedingungen](#)

Zuschläge

- Mindermengenzuschlag
- Trockeneiszuschlag
- Gefahrgutzuschlag
- Expressversand

SZABO-SCANDIC HandelsgmbH

Quellenstraße 110, A-1100 Wien

T. +43(0)1 489 3961-0

F. +43(0)1 489 3961-7

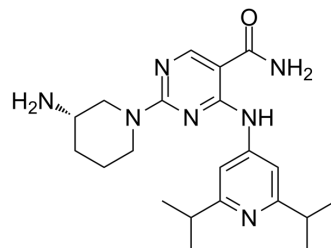
mail@szabo-scandic.com

www.szabo-scandic.com

[linkedin.com/company/szaboscandic](https://www.linkedin.com/company/szaboscandic) 

CS640

Cat. No.:	HY-148907		
CAS No.:	2388506-83-8		
Molecular Formula:	C ₂₁ H ₃₁ N ₇ O		
Molecular Weight:	397.52		
Target:	Biochemical Assay Reagents		
Pathway:	Others		
Storage:	Powder	-20°C	3 years
	In solvent	-80°C	6 months
		-20°C	1 month



SOLVENT & SOLUBILITY

In Vitro

DMSO : 5 mg/mL (12.58 mM; ultrasonic and warming and heat to 60°C)

Concentration	Mass		
	1 mg	5 mg	10 mg
1 mM	2.5156 mL	12.5780 mL	25.1560 mL
5 mM	0.5031 mL	2.5156 mL	5.0312 mL
10 mM	0.2516 mL	1.2578 mL	2.5156 mL

Please refer to the solubility information to select the appropriate solvent.

BIOLOGICAL ACTIVITY

Description

CS640 is a selective inhibitor of calmodulin-dependent kinases. CS640 inhibits CaMK1D, CaMK1B, CaMK1A, CaMK1G, PIP5K1C, MEK5, RIPK4 and MLK3 with IC₅₀ values of 0.08, 0.03, 0.001, 0.001, 11.2, 0.025, 5.69 and 2.75 μM, respectively. CS640 also shows inhibitory effects to CYP450 2C9 and CYP450 2C19 with IC₅₀ values of 6 and 10 μM, respectively^[1].

REFERENCES

[1]. Fromont C, et al. Discovery of Highly Selective Inhibitors of Calmodulin-Dependent Kinases That Restore Insulin Sensitivity in the Diet-Induced Obesity in Vivo Mouse Model. *J Med Chem.* 2020 Jul 9;63(13):6784-6801.

Caution: Product has not been fully validated for medical applications. For research use only.

Tel: 609-228-6898

Fax: 609-228-5909

E-mail: tech@MedChemExpress.com

Address: 1 Deer Park Dr, Suite Q, Monmouth Junction, NJ 08852, USA