



# SZABO SCANDIC

Part of Europa Biosite

## Produktinformation



Forschungsprodukte & Biochemikalien



Zellkultur & Verbrauchsmaterial



Diagnostik & molekulare Diagnostik



Laborgeräte & Service

Weitere Information auf den folgenden Seiten!  
See the following pages for more information!



### Lieferung & Zahlungsart

siehe unsere [Liefer- und Versandbedingungen](#)

### Zuschläge

- Mindermengenzuschlag
- Trockeneiszuschlag
- Gefahrgutzuschlag
- Expressversand

### SZABO-SCANDIC HandelsgmbH

Quellenstraße 110, A-1100 Wien

T. +43(0)1 489 3961-0

F. +43(0)1 489 3961-7

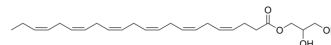
[mail@szabo-scandic.com](mailto:mail@szabo-scandic.com)

[www.szabo-scandic.com](http://www.szabo-scandic.com)

[linkedin.com/company/szaboscandic](https://www.linkedin.com/company/szaboscandic) 

## Docosahexaenoyl glycerol

Cat. No.:	HY-148940
CAS No.:	140670-40-2
Molecular Formula:	C <sub>25</sub> H <sub>38</sub> O <sub>4</sub>
Molecular Weight:	402.57
Target:	Others
Pathway:	Others
Storage:	Please store the product under the recommended conditions in the Certificate of Analysis.



### BIOLOGICAL ACTIVITY

<b>Description</b>	Docosahexaenoyl glycerol is an analog of endocannabinoid, which stimulates the glucose uptake and exhibits anti-inflammatory efficacy <sup>[1][2]</sup> .
--------------------	---

### REFERENCES

[1]. Dotsey E, et al., Transient Cannabinoid Receptor 2 Blockade during Immunization Heightens Intensity and Breadth of Antigen-specific Antibody Responses in Young and Aged mice. *Sci Rep.* 2017 Feb 17;7:42584.

[2]. Price CA, et al., Plasma fatty acid ethanolamides are associated with postprandial triglycerides, ApoCIII, and ApoE in humans consuming a high-fructose corn syrup-sweetened beverage. *Am J Physiol Endocrinol Metab.* 2018 Aug 1;315(2):E141-E149. doi: 10.1152/ajpendo.00406.2017IF: 5.1 Q1 . Epub 2018 Apr 10.

**Caution: Product has not been fully validated for medical applications. For research use only.**

Tel: 609-228-6898

Fax: 609-228-5909

E-mail: tech@MedChemExpress.com

Address: 1 Deer Park Dr, Suite Q, Monmouth Junction, NJ 08852, USA