



# SZABO SCANDIC

Part of Europa Biosite

## Produktinformation



Forschungsprodukte & Biochemikalien



Zellkultur & Verbrauchsmaterial



Diagnostik & molekulare Diagnostik



Laborgeräte & Service

Weitere Information auf den folgenden Seiten!  
See the following pages for more information!



### Lieferung & Zahlungsart

siehe unsere [Liefer- und Versandbedingungen](#)

### Zuschläge

- Mindermengenzuschlag
- Trockeneiszuschlag
- Gefahrgutzuschlag
- Expressversand

### SZABO-SCANDIC HandelsgmbH

Quellenstraße 110, A-1100 Wien

T. +43(0)1 489 3961-0

F. +43(0)1 489 3961-7

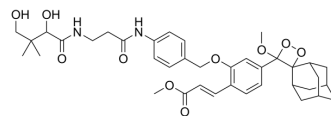
[mail@szabo-scandic.com](mailto:mail@szabo-scandic.com)

[www.szabo-scandic.com](http://www.szabo-scandic.com)

[linkedin.com/company/szaboscandic](https://www.linkedin.com/company/szaboscandic) 

## CL-Pa

Cat. No.:	HY-149594
Molecular Formula:	C <sub>38</sub> H <sub>48</sub> N <sub>2</sub> O <sub>10</sub>
Molecular Weight:	692.8
Target:	Others
Pathway:	Others
Storage:	Please store the product under the recommended conditions in the Certificate of Analysis.



## BIOLOGICAL ACTIVITY

### Description

CL-Pa is a chemiluminescent probe suitable for detection of urinary Vanin-1. CL-Pa can be used to detect drug-induced acute kidney injury (AKI) through urinalysis<sup>[1]</sup>.

## REFERENCES

[1]. Yurong Feng, et al. Vanin-1-Activated Chemiluminescent Probe: Help to Early Diagnosis of Acute Kidney Injury with High Signal-to-Noise Ratio through Urinalysis. Anal Chem. 2023 Oct 3;95(39):14754-14761.

**Caution: Product has not been fully validated for medical applications. For research use only.**

Tel: 609-228-6898

Fax: 609-228-5909

E-mail: tech@MedChemExpress.com

Address: 1 Deer Park Dr, Suite Q, Monmouth Junction, NJ 08852, USA