



SZABO SCANDIC

Part of Europa Biosite

Produktinformation



Forschungsprodukte & Biochemikalien



Zellkultur & Verbrauchsmaterial



Diagnostik & molekulare Diagnostik



Laborgeräte & Service

Weitere Information auf den folgenden Seiten!
See the following pages for more information!



Lieferung & Zahlungsart

siehe unsere [Liefer- und Versandbedingungen](#)

Zuschläge

- Mindermengenzuschlag
- Trockeneiszuschlag
- Gefahrgutzuschlag
- Expressversand

SZABO-SCANDIC HandelsgmbH

Quellenstraße 110, A-1100 Wien

T. +43(0)1 489 3961-0

F. +43(0)1 489 3961-7

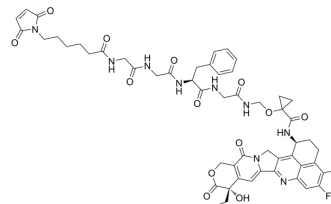
mail@szabo-scandic.com

www.szabo-scandic.com

[linkedin.com/company/szaboscandic](https://www.linkedin.com/company/szaboscandic) 

MC-Gly-Gly-Phe-Gly-amide-cyclopropanol-amide-Exatecan

Cat. No.:	HY-150402
CAS No.:	2414254-41-2
Molecular Formula:	C ₅₄ H ₅₈ FN ₉ O ₁₃
Molecular Weight:	1060.09
Target:	Drug-Linker Conjugates for ADC
Pathway:	Antibody-drug Conjugate/ADC Related
Storage:	-20°C, sealed storage, away from moisture * In solvent : -80°C, 6 months; -20°C, 1 month (sealed storage, away from moisture)



SOLVENT & SOLUBILITY

In Vitro

DMSO : 60 mg/mL (56.60 mM; ultrasonic and warming and heat to 60°C)

Preparing Stock Solutions	Solvent Concentration	Mass		
		1 mg	5 mg	10 mg
	1 mM	0.9433 mL	4.7166 mL	9.4332 mL
	5 mM	0.1887 mL	0.9433 mL	1.8866 mL
	10 mM	0.0943 mL	0.4717 mL	0.9433 mL

Please refer to the solubility information to select the appropriate solvent.

BIOLOGICAL ACTIVITY

Description

MC-Gly-Gly-Phe-Gly-amide-cyclopropanol-amide-Exatecan is a pharmaceutical composition containing antibody agent conjugate (ADC). (extracted from patent WO2021190581 Example 1-8)^[1].

IC₅₀ & Target

Auristatin

REFERENCES

[1]. Yue Zhanlong, et al. Pharmaceutical composition comprising antibody drug conjugate and use thereof. WO2021190581A1.

Caution: Product has not been fully validated for medical applications. For research use only.

Tel: 609-228-6898

Fax: 609-228-5909

E-mail: tech@MedChemExpress.com

Address: 1 Deer Park Dr, Suite Q, Monmouth Junction, NJ 08852, USA