



SZABO SCANDIC

Part of Europa Biosite

Produktinformation



Forschungsprodukte & Biochemikalien



Zellkultur & Verbrauchsmaterial



Diagnostik & molekulare Diagnostik



Laborgeräte & Service

Weitere Information auf den folgenden Seiten!
See the following pages for more information!



Lieferung & Zahlungsart

siehe unsere [Liefer- und Versandbedingungen](#)

Zuschläge

- Mindermengenzuschlag
- Trockeneiszuschlag
- Gefahrgutzuschlag
- Expressversand

SZABO-SCANDIC HandelsgmbH

Quellenstraße 110, A-1100 Wien

T. +43(0)1 489 3961-0

F. +43(0)1 489 3961-7

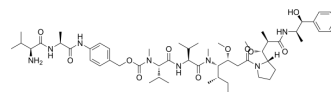
mail@szabo-scandic.com

www.szabo-scandic.com

[linkedin.com/company/szaboscandic](https://www.linkedin.com/company/szaboscandic) 

Val-Ala-PAB-MMAE

Cat. No.:	HY-153032
CAS No.:	1912408-92-4
Molecular Formula:	C ₅₅ H ₈₈ N ₈ O ₁₁
Molecular Weight:	1037.33
Target:	Drug-Linker Conjugates for ADC
Pathway:	Antibody-drug Conjugate/ADC Related
Storage:	4°C, protect from light * In solvent : -80°C, 6 months; -20°C, 1 month (protect from light)



SOLVENT & SOLUBILITY

In Vitro	DMSO : 100 mg/mL (96.40 mM; Need ultrasonic)				
		Solvent Concentration	Mass		
	Preparing Stock Solutions	1 mM	1 mg	5 mg	10 mg
		5 mM	0.1928 mL	0.9640 mL	1.9280 mL
		10 mM	0.0964 mL	0.4820 mL	0.9640 mL
Please refer to the solubility information to select the appropriate solvent.					
In Vivo	1. Add each solvent one by one: 10% DMSO >> 40% PEG300 >> 5% Tween-80 >> 45% saline Solubility: ≥ 2.5 mg/mL (2.41 mM); Clear solution 2. Add each solvent one by one: 10% DMSO >> 90% corn oil Solubility: ≥ 2.5 mg/mL (2.41 mM); Clear solution				

BIOLOGICAL ACTIVITY

Description	Val-Ala-PAB-MMAE is a Drug-Linker Conjugate for ADC, consisting of ADC linker (Val-Ala-PAB) and MMAE. MMAE is an effective inhibitor of tubulin.
-------------	--

Caution: Product has not been fully validated for medical applications. For research use only.

Tel: 609-228-6898

Fax: 609-228-5909

E-mail: tech@MedChemExpress.com

Address: 1 Deer Park Dr, Suite Q, Monmouth Junction, NJ 08852, USA