



# SZABO SCANDIC

Part of Europa Biosite

## Produktinformation



Forschungsprodukte & Biochemikalien



Zellkultur & Verbrauchsmaterial



Diagnostik & molekulare Diagnostik



Laborgeräte & Service

Weitere Information auf den folgenden Seiten!  
See the following pages for more information!



### Lieferung & Zahlungsart

siehe unsere [Liefer- und Versandbedingungen](#)

### Zuschläge

- Mindermengenzuschlag
- Trockeneiszuschlag
- Gefahrgutzuschlag
- Expressversand

### SZABO-SCANDIC HandelsgmbH

Quellenstraße 110, A-1100 Wien

T. +43(0)1 489 3961-0

F. +43(0)1 489 3961-7

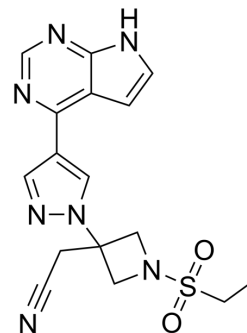
[mail@szabo-scandic.com](mailto:mail@szabo-scandic.com)

[www.szabo-scandic.com](http://www.szabo-scandic.com)

[linkedin.com/company/szaboscandic](https://www.linkedin.com/company/szaboscandic) 

## Baricitinib (Standard)

Cat. No.:	HY-15315R
CAS No.:	1187594-09-7
Molecular Formula:	C <sub>16</sub> H <sub>17</sub> N <sub>7</sub> O <sub>2</sub> S
Molecular Weight:	371.42
Target:	JAK
Pathway:	Epigenetics; JAK/STAT Signaling; Protein Tyrosine Kinase/RTK; Stem Cell/Wnt
Storage:	Please store the product under the recommended conditions in the Certificate of Analysis.



### BIOLOGICAL ACTIVITY

**Description** Baricitinib (Standard) is the analytical standard of Baricitinib. This product is intended for research and analytical applications. Baricitinib (LY3009104; INCB028050) is a selective and orally bioavailable JAK1 and JAK2 inhibitor with IC<sub>50</sub>s of 5.9 nM and 5.7 nM, respectively.

**IC<sub>50</sub> & Target** IC<sub>50</sub>: 5.9 nM (JAK1), 5.7 nM (JAK2), >400 (JAK3), 53 nM (Tyk2)<sup>[1]</sup>

### REFERENCES

- [1]. Fridman JS, et al. Selective inhibition of JAK1 and JAK2 is efficacious in rodent models of arthritis: preclinical characterization of INCB028050. *J Immunol.* 2010 May 1;184(9):5298-307.
- [2]. Jabbari A, et al. Reversal of Alopecia Areata Following Treatment With the JAK1/2 Inhibitor Baricitinib. *EBioMedicine.* 2015 Feb 26;2(4):351-5.
- [3]. Khan IM, et al. Intermuscular and perimuscular fat expansion in obesity correlates with skeletal muscle T cell and macrophage infiltration resistance. *Int J Obes (Lond).* 2015 Nov;39(11):1607-18.

**Caution: Product has not been fully validated for medical applications. For research use only.**

Tel: 609-228-6898

Fax: 609-228-5909

E-mail: tech@MedChemExpress.com

Address: 1 Deer Park Dr, Suite Q, Monmouth Junction, NJ 08852, USA